

Contents

02 Service

06 Public Transportation

10 Travel Information

12 Highlights

20 Museums & Castles

34 Sightseeing Tours

40 Naturally Munich

44 Excursions

54 Events

56 Specials

63 Shopping

70 Music

77 Imprint

78 Sport Live



Neue Pinakothek in the Munich Art District



Service

The München Tourismus offers a wide range of services – including information about art and culture, recreation and gastronomy – to help you plan and enjoy your stay in the best Munich way. Our staff is multilingual.



Information about Munich/Hotel Reservations

By telephone

Tel. +49-(0)89-233-96500

Fax +49-(0)89-233-30030

Mon-Fri 9am-5pm

tourismus.gs@muenchen.de

In writing

tourismus.gs@muenchen.de

München Tourismus

Gäste- und Hotelservice

Sendlinger Str. 1

80331 Munich

Hotel Service (Information and Booking)

Conventions, Conferences and Events

Tel. +49 89-233-96555

Fax +49 89-233-30319

tourismus.hotelservice@muenchen.de

Group Tours, Class Trips

Tel. +49 89-233-96555

Fax +49 89-233-30319

tourismus.gruppenreisen@muenchen.de

Guided Tours for Groups

Qualified guides offer city walks and tours in more than 25 languages.

Customized tours upon request.

Tel. +49 89-233-96555, Fax +49 89-233-30319

tourismus.guides@muenchen.de

Visitors not traveling with a group may obtain information about guided tours in the Tourist Information Centers or by calling +49 89-233-96500

At each of the Tourist Information Centers

- Free and reliable advice in several languages
- Room reservations (hotels, pensions, guest houses, youth hostels)
- Booking for city sightseeing tours and walks as well as excursions in the surrounding area, including the Bavarian castles and lakes
- City maps, guidebooks and sale of souvenirs

At the Main Train Station (Hauptbahnhof)

Mon-Sat 9am-8pm

Sun 10am-6pm

Subject to seasonal changes

At Marienplatz in the New Town Hall (Neues Rathaus)

Mon-Fri 9am-7pm

Sat 9am-4pm

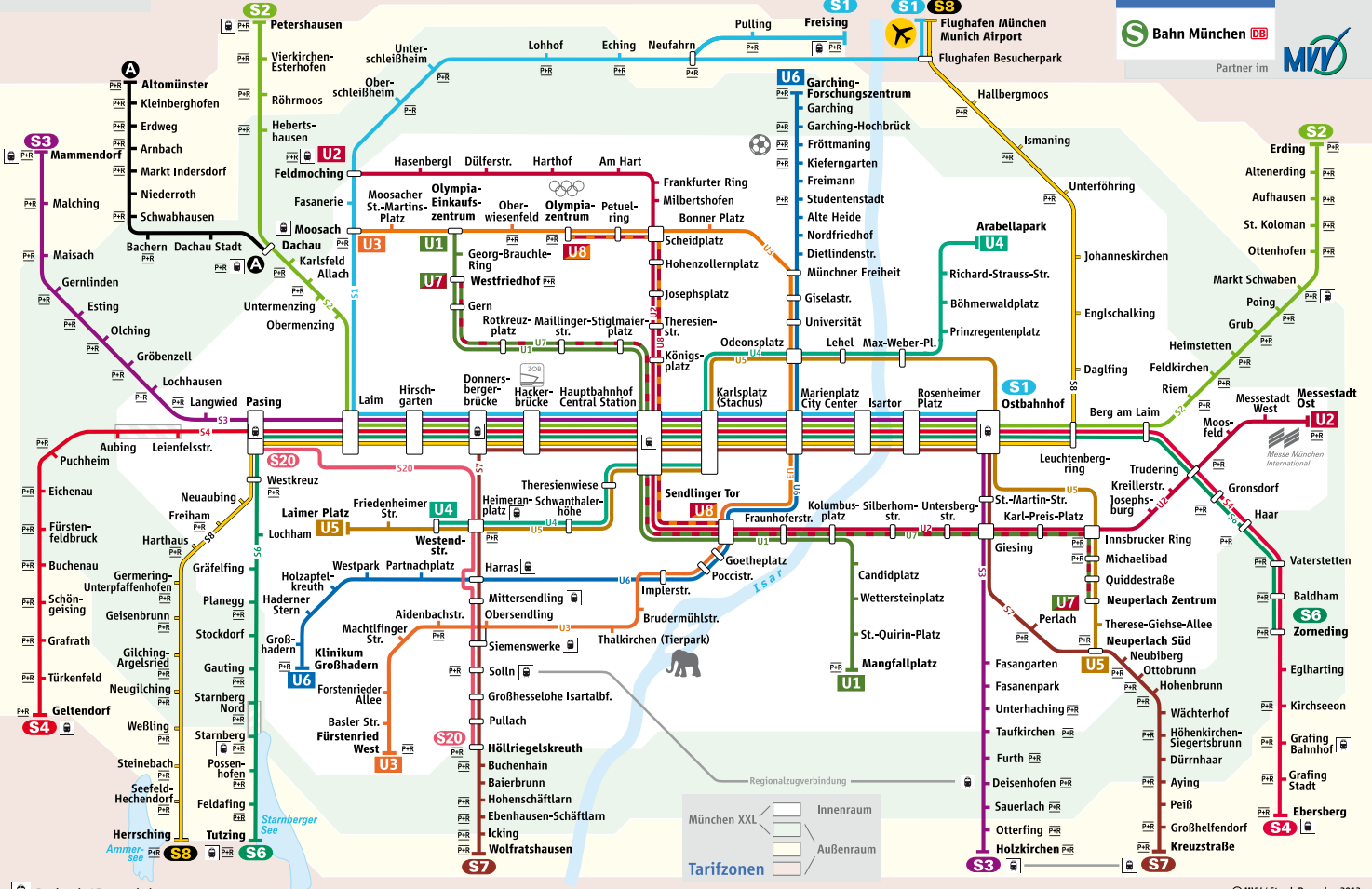
Sun 10am-2pm

Subject to seasonal changes





Schnellbahnnetz



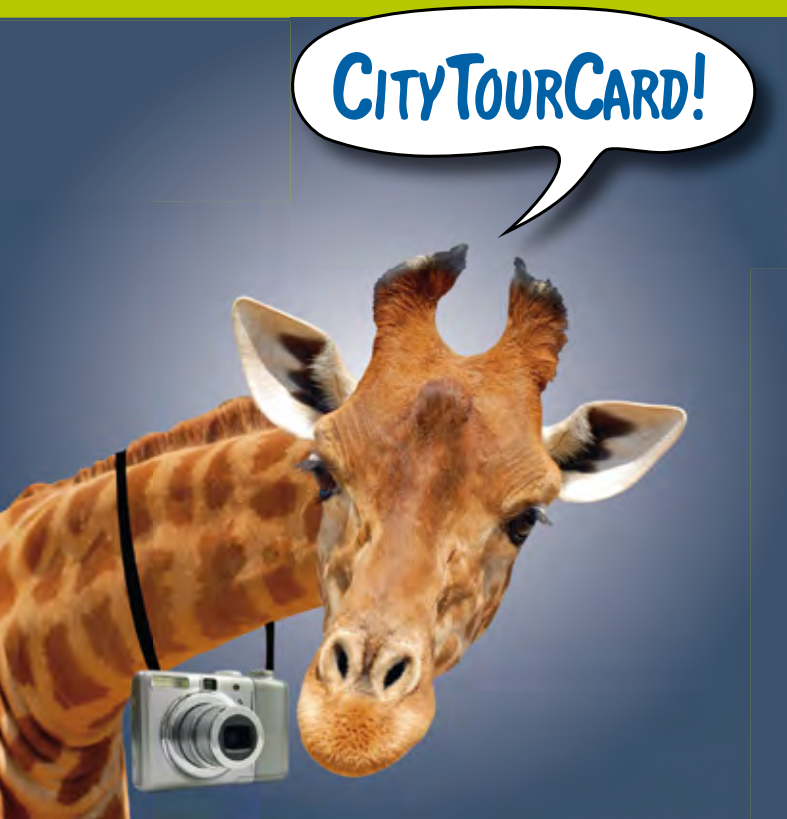
Regional- / Fernzughalt

© MVV / Stand: Dezember 2013

Public Transportation



For those who want to get an overview of Munich



CityTourCard:
Our ticket for visitors to Munich

Enjoy Munich "all inclusive" with the CityTourCard from 9.90 per day: free rides with the S-Bahn, U-Bahn, buses and trams plus many discounts from more than 60 tourist attractions. You can get the CityTourCard from ticket machines, customer centres, the tourist information at Hauptbahnhof and Marienplatz as well as selected hotels. Please validate your ticket before you start your trip.

CityTourCard:
For tourists and enterprising locals
www.citytourcard-muenchen.com



CityTourCard including the MVV Day Ticket

Area of validity and validity time	Single ticket	Partner Day Ticket*
Inner District – 1 day	€ 9.90	€ 17.90
Inner District – 3 days	€ 20.90	€ 30.90
Entire Network - 3 days	€ 32.90	€ 53.90

The MVV Day Ticket enables you to take as many trips as you like on one day within the city of Munich. It is available for one or three days. The Inner District is the area of validity for the city of Munich. You need a Day Ticket for the Entire Network to go as far as the airport. Please validate your ticket before you start your trip.

MVV Day Tickets:
Get the green light in Munich from 5.80 a day
www.mvv-muenchen.de

MVV Day Ticket Inner District

Area of Validity	Single Day Ticket	Partner Day Ticket*
Inner District – 1 day	€ 5.80	€ 10.60
Inner District – 3 days	€ 14.30	€ 24.60
Entire Network – 1 day	€ 11.20	€ 20.40
Entire Network – 3 days	€ 14.30	€ 24.60

Inner District: Munich city area – white zone
The Entire Network includes trips to the airport

* for up to five adults, whereby any two children between 6 and 14 years of age count as one adult



Travel Information

Geography

The city of Munich is situated near the Bavarian Alps, in the heart of Europe.

Weather

Munich is in a temperate climate zone, which means that it never gets too cold in the winter – or too hot in the summer.

Munich International Airport

Terminal 1

All flights not operated by Lufthansa, Star Alliance members or LH code-share partners are handled in T1.

Terminal 2

T2 is a unique joint project by Munich Airport and Deutsche Lufthansa AG and is used exclusively by Lufthansa, Star Alliance members and LH code-share partners.

Two Service Centers are open round the clock to help you with:

- Lost luggage, garment valet, safe deposit, faxing, photocopying, dry cleaning, telephone cards ...
- Tickets for Munich's suburban trains (S-Bahn)
- Airport bus tickets
- Travel insurance
- Access to the new internet terminals/ mobile phone rental service

Service Center, Central Area

Tel. +49 89-97521375
Fax +49 89-97521376

Service Center, Terminal 2 –Public Area, Level 03:

Tel. +49 89-97522875
Fax +49 89-97522876

Munich Airport Authority Switchboard

Tel. +49 89-97500
Fax +49 89-97557906
info@munich-airport.de

Information Services Flight Inquiries

Tel. +49 89-97521313

Help for the Disabled

Tel. +49 89-97563333
Fax +49 89-97590175
mail@md-medicus.net

Porter Service

Tel. +49 89 97599795
Mobile +49 171-3727179
Fax +49 89-97599796

Ideal Traffic Connections

Car Rental Service

Avis: Tel. +49 89-97597600
Europcar: Tel. +49 89-9735020
Hertz: Tel. +49 89-978860
National/Alamo: Tel. +49 1805-462526
Sixt: Tel. +49 1805-262525

Transportation Routes – Quick Connections

The airport rail links S1 and S8 run to the Munich Main Train Station (Hauptbahnhof), departing every ten minutes.

S8 Munich Airport

Daily from 4:04am until 1:24am, every 20 minutes from the Central Area, Sat and Sun additional night service at 1:42am
Traveling time: to the Munich East Train Station (Ostbahnhof): 31 min, to the Main Train Station (Hauptbahnhof): 42 min

S1 Munich Airport

Mon-Fri at 4:31am, Sat and Sun at 5:31am, and then daily from 5:51am until 0:11am, every 20 minutes from the Central Area.
Travel time: to the Munich East Train Station (Ostbahnhof): 53 min, to the Main Train Station (Hauptbahnhof): 45 min

Why not take the bus to Munich?

The Lufthansa shuttle bus drives to the Munich Main Train Station (Hauptbahnhof) with one stop in Munich North/Schwabing. It departs every 20 minutes (daily from 6:20am-9:40pm) from T1 (area A), Central Area and T2 (north side).

www.munich-airport.de



View of Saint Cajetan

Highlights



Nymphenburg Palace



Residenz

Neues Rathaus and Glockenspiel **famjly**

Every day at 11am and noon (in the summer also at 5pm), the mechanical dancers in the tower of the New Town Hall come to life when the clock chimes the hour ▶ Marienplatz 8, 80331 Munich | S1-8, U3/6, bus 52 Marienplatz | tower visits: Nov-Apr: Mon-Fri 10am-5pm, closed Sat/Sun/holidays, May-Oct: Mon-Fri 10am-7pm, closed Sat/Sun/holidays.

Frauenkirche (Church of Our Lady)

With its twin onion-domed towers which are visible from afar, the Gothic cathedral and parish church is a distinctive landmark of Munich ▶ Frauenplatz 1, 80331 Munich | Tel. 089-2900820 | S1-8, U3/6, bus 52 Marienplatz | Sat-Wed 7am-7pm, Thu 7am-8:30pm, Fri 7am-6pm | www.muenchner-dom.de

Schloss Nymphenburg **famjly**

The impressive Baroque palace to the west of Munich was built as summer residence for the Bavarian Electors ▶ Schloss Nymphenburg, entrance 1, 80638 Munich | Tel. 089-179080 | sgvnympfenburg@bsv.bayern.de | tram 17, bus 51 Schloss Nymphenburg | Apr 1-Oct 15: 9am-6pm, Oct 16-Mar 31: 10am-4 pm | The Badenburg, Pagodenburg and Magdalenenklaue pavilions are closed in winter | www.schloss-nymphenburg.de

Asamkirche

Munich's loveliest Rococo church, built by the Asam brothers in the 18th century ▶ Sendlinger Str. 34, 80331 Munich | Tel. 089-23687989 | U1-3/6, tram 16-18/27, bus 152 Sendlinger Tor | daily 8am-5:30pm | no visits during religious services

Residenz **famjly**

The extensive complex was the home of the Wittelsbach dynasty and ranks among Europe's most prestigious palaces ▶ Residenzstr. 1, 80333 Munich | Tel. 089-290671 | info@bsv.bayern.de | U3/6, bus Museum line 100 Odeonsplatz, S1-8, U3/6, bus 52 Marienplatz | Apr 1-Oct 15: 9am-6pm, Oct 16-Mar 31: 10am-5pm, closed Jan 1, Shrove Tuesday, Dec 24/25/31 | free admission for children and adolescents up to 18 years | www.residenz-muenchen.de

Herz Jesu Kirche

Place of worship with a futuristic facade untypical of churches

▶ Lachnerstr. 8, 80639 Munich | Tel. 089-1306750 | herz-jesu.muenchen@erzbistum-muenchen.de | tram 12/16/17, bus 51 Romanplatz, U1 Rotkreuzplatz | daily 8am-7pm, Tue 8am-noon: church interior closed during cleaning | no visits during religious services | www.herzjesu-muenchen.de

Altes Rathaus

The Old Town Hall is an elegant example of Bavarian Gothic

▶ Marienplatz 15, 80331 Munich | S1-8, U3/6, bus 52 Marienplatz | can only be viewed from the outside

Hofbräuhaus

One of Munich's best-known and most popular attractions; the brewery about which many songs have been written ▶ Am Platzl 9, 80331 Munich | Tel. 089-290136100 | hbteam@hofbraeuhaus.de | S1-8, U3/6, bus 52 Marienplatz, tram 19 Nationaltheater | daily 9am-11:30pm | www.hofbraeuhaus.de

Allianz Arena **famjly**

Futuristic stadium designed by the architects Herzog/de Meuron. Since 2005 home pitch of FC Bayern München ▶ Werner-Heisenberg-Allee 25, 80939 Munich | information about Arena tours at tel. 089-69931222 | besucher@allianz-arena.de | U6 Fröttmaning | guided tours daily except on home games days and days featuring an event | www.allianz-arena.de

Hofgarten **famjly**

One of the finest Renaissance gardens north of the Alps

▶ At Odeonsplatz near the Residenz | U3/6, bus Museum line 100 Odeonsplatz, S1-8, U3/6, bus 52 Marienplatz

Bamberger Haus

Splendid little palace (built in the Franconian Baroque style) in Luitpoldpark, with garden terrace and gastronomy ▶ Brunnerstrasse 2, 80804 Munich | U2/U3 Scheidplatz, tram 27 Gartenstrasse



Hofbräuhaus

Viktualienmarkt

Munich's oldest market, originally a farmer's market, is now a favorite shopping area for gourmets ▶ 80331 Munich | S1-8, U3/6, bus 52 Marienplatz or Viktualienmarkt | Mon-Sat until 8pm at the latest | www.viktualienmarkt.de

Alter Peter (Saint Peter's Church)

Munich's oldest parish church ▶ Rindermarkt 1, 80331 Munich | Tel. 089-210237760 | S1-8, U3/6, bus 52 Marienplatz | daily 7:30am-7pm, closed Wed afternoon | Tower: summer: Mon-Fri 9am-6:30pm, Sat/Sun/holidays 10am-6:30pm, winter: Mon-Fri 9am-5:30pm, Sat/Sun/holidays 10am-5:30pm | no visits during religious services

Fünf Höfe

The city quarter "Five Courtyards" in the heart of Munich presents a unique combination of exquisite shopping supplemented by culinary delights ▶ Maffeistr., Theatinerstr., Salvatorstr., Kardinal-Faulhaber-Str., 80331 Munich | S1-8, U3/6, bus 52 Marienplatz, U3/6 Odeonsplatz, tram 19 Theatinerstr. | opening hours depending on the store | www.fuenfhoefe.de

Schrannenhalle

The original design of the "Schrannenhalle" followed a French model. Rebuilt with the original wrought-iron frames, the new site was inaugurated in September 2005 ▶ Viktualienmarkt 15, 80331 Munich | Tel. 089-452284610 | S1-8, U3/6 Marienplatz, bus 52 Viktualienmarkt | www.schrannenhalle.de

Uptown Munich

At a height of 146 meters the city's tallest office building ▶ Georg-Brauchle-Ring 50-66, 80992 Munich | U1 Georg-Brauchle-Ring | can only be viewed from the outside

Maximilianhöfe

The complex on Munich's luxury mile showcases prestigious boutiques and fine restaurants ▶ Maximilianstr. 13/15, 80539 Munich | S1-8, U3/6 Marienplatz | open daily

Feldhermhalle

This classicistic building is modeled on the Loggia dei Lanzi in Florence ▶ Residenzstr. 1, 80333 Munich | Tel. 089-290671 | ResidenzMuenchen@bsv.bayern.de | S1-8, U3/6, bus 52 | Marienplatz, tram 19 Nationaltheater, U3/6, bus Museum line 100 Odeonsplatz

Englischer Garten family

For over 200 years, the English Garden has been a favorite spot for strollers young and old, with its 373 hectares of lush meadows and its inviting beer gardens ▶ Between Prinzregentenstr. and Munich-Freimann | U3/6 Universität or Giselastr., tram 17, bus Museum line 100 Nationaltheater/Haus der Kunst | www.schloesser.bayern.de

Chinesischer Turm

The Chinese Tower was built over 200 years ago in the heart of the English Garden Restaurant with beer garden ▶ Englischer Garten 3, 80538 Munich | Tel. 089-3838730 | info@chinatorum.de | bus 54/154 Chinesischer Turm | daily 10am-11pm | www.chinesischer-turm.de

Theatinerkirche (Saint Cajetan)

Baroque church with ornate carvings ▶ Theatinerstr. 22, 80333 Munich | Tel. 089-2106960 | info@theatinerkirche.de | U3/6, bus Museum line 100 Odeonsplatz, S1-8, U3/6, bus 52 Marienplatz | no visits during religious services | www.theatinerkirche.de



Top:
Church of Our Lady
and Saint Cajetan



Statue of Bavaria
in front of the Hall
of Fame (I.)

Bavaria and Ruhmeshalle *famjly*

The Hall of Fame on the hill was built between 1843 and 1853. It was commissioned by Ludwig I of Bavaria to honor Bavarian persons of merit ▶ Theresienhöhe 16, 80339 Munich | Tel. 089-290671 | U4/5 Theresienwiese, bus 131/134 Theresienhöhe | viewing platform in the head of the Bavaria statue: Apr-Oct 15: 9am-6pm, Oct 16-Mar: closed | www.schloesser.bayern.de

Maximilianeum

Seat of the Bavarian parliament and the "Maximilianeum" foundation for gifted students from Bavaria ▶ Max-Planck-Str. 1, 81675 Munich | Tel. 089-41260 | landtag@bayern.landtag.de | U4/U5 Max-Weber-Platz | www.bayern.landtag.de

HypoVereinsbank

The central headquarters of the HypoVereinsbank symbolize Munich's flair for modern architecture ▶ Arabellastr. 12, 81925 Munich | Tel. 089-23780 | hvbgroupp@hvbgroupp.com | U4 Arabellapark | can only be viewed from the outside



Viktualienmarkt and
Alter Peter (Saint Peter's Church)

Original settings of German films

Filmstadt guided tour

YOUR EXCITING JOURNEY THROUGH THE WORLD OF CINEMA AND TV!

★ ★ ★
A great
experience!
★ ★ ★

Presenting TV weather

4 D Motion Simulation Cinema

Scan for more



BAVARIA FILMSTADT
Bavariafilmplatz 7
82031 Geiseltasteig near Munich

Tickets and information:
Phone: +49 (0) 89 64 99-2000
Web: www.filmstadt.de





Museum Brandhorst

Museums and Castles



Museums

Staatliche Antikensammlung and Glyptothek

The Glyptothek at Königsplatz in Munich displays antique sculptures from Greek and Roman times. The State Collection of Antiquities exhibits Greek, Etruscan and Roman craftwork from the third millennium B.C. to 400 A.D. ▶ Königsplatz, 80333 Munich | Tel. Glyptothek: 089-286100, Tel. Antikensammlung: 089-59988830 | info@antike-am-koenigsplatz.mwn.de | U2 Königsplatz, tram 27 Karolinenplatz, bus Museum line 100 Königsplatz | Glyptothek: Tue-Sun 10am-5pm, Thu 10am-8pm Antikensammlung: Tue-Sun 10am-5pm, Wed 10am-8pm | www.antike-am-koenigsplatz.mwn.de

Archäologische Staatssammlung – Museum für Vor- und Frühgeschichte *familiy*

Directly adjacent to the English Garden the State Archeological Collection presents exhibits from 120,000 years of Bavarian settlement ▶ Lerchenfeldstr. 2, 80538 Munich | Tel. 089-2112402 | asm@extern.lrz-muenchen.de | U4/5 Lehel, tram 17, bus Museum line 100 Bayerisches Nationalmuseum/Haus der Kunst | daily except Mon 9:30am-5pm | www.archaeologie-bayern.de



Königsplatz with
Glyptothek

Drawing by Rembrandt (left), Old Masters in the Alte Pinakothek (right)

Staatliches Museum Ägyptischer Kunst *familiy*

The State Museum of Egyptian Art is accommodated in the **munich art district** and presents artifacts from all epochs of Ancient Egypt ▶ Arcisstrasse 16 | Tel. 089-28927630 | info@smaek.de | U2/8, bus Museum line 100 Pinakothek, tram 27 Karolinenplatz | Wed-Sun 10am-6pm, Tue 10am-8pm, closed Mon | www.aegyptisches-museum-muenchen.de

Alte Pinakothek *familiy*

This art gallery is renowned far beyond Munich. More than 700 paintings from the 14th-18th centuries can be admired in the permanent exhibition with a focus on Renaissance and Dutch Baroque painting ▶ Barerstr. 27, 80333 Munich | Tel. 089-23805216 | info@pinakothek.de | U2 Königsplatz, tram 27 Pinakotheken, bus Museum line 100 Pinakotheken | Tue 10am-8pm, Wed-Sun 10am-6pm, closed Mon | www.pinakothek.de

Neue Pinakothek *familiy*

The Neue Pinakothek houses paintings from all important epochs from the late 18th to the beginning of the 20th century ▶ Barerstr. 29, 80799 Munich | Tel. 089-23805195 | info@pinakothek.de | U2 Theresienstr., tram 27 Pinakotheken, bus Museum line 100 Pinakotheken, bus 154 Schellingstr. | daily 10am-6pm, Wed 10am-8pm, closed Tue | www.pinakothek.de

Pinakothek der Moderne

The Pinakothek der Moderne ranks among the greatest and most important museums of modern art worldwide featuring works by Beckmann, Kandinsky, Marc, Macke, Klee, Magritte and Picasso ▶ Barerstr. 40, 80333 Munich | Tel. 089-23805360 | info@pinakothek.de | U3/6 Odeonsplatz, U2 Theresienstr., tram 27 Pinakotheken, bus Museum line 100 Pinakotheken, bus 154 Schellingstr. | Tue-Sun 10am-6pm, Thu 10am-8pm, closed Mon | www.pinakothek-der-moderne.de



Städtische Galerie im Lenbachhaus and Kunstbau

The Lenbachhaus was built for the “painter prince” Franz von Lenbach in the 19th century. Today it houses paintings, sculptures of classical modern and contemporary art. Temporary exhibitions in the Kunstbau present first-class work compilations. The Blue Rider collection including works by Kandinsky, Marc, Klee, etc., is world-famous ▶ Luisenstr. 33, 80333 Munich | Tel. 089-23332 000 | lenbachhaus@muenchen.de | U2 Königsplatz, tram 27 Karolinenplatz, bus Museum line 100 Königsplatz | daily 10am-6pm, except Mo | www.lenbachhaus.de

Sammlung Schack

The Schack collection on Prinzregentenstrasse presents paintings by German artists from the 19th century, such as Böcklin, Lenbach, and others ▶ Prinzregentenstr. 9, 80538 Munich | Tel. 089-23805224 | info@pinakothek.de | U4/5 Lehel, tram 17, bus Museum line 100 Reitmorstr. | Wed-Sun 10am-6pm, every 1st and 3rd Wed of the month 10am-8pm | www.sammlungschack.de

Museum Villa Stuck

In addition to Franz von Stuck’s historical residential quarters and atelier Villa Stuck also provides space for special exhibitions ▶ Prinzregentenstr. 60, 81675 Munich | Tel. 089-4555510 | villastuck@muenchen.de | U4 Prinzregentenplatz or Max-Weber-Platz, tram 18, bus Museum line 100 Friedensengel | Tue-Sun 11am-6pm, every 1st Fr of the month 11am-10pm | www.villastuck.de

Bayerisches Nationalmuseum family

The exhibits of the Bavarian National Museum present the art and cultural history of Bavaria and Southern Germany ▶ Prinzregentenstr. 3, 80538 Munich | Tel. 089-2112401 | bay.nationalmuseum@bnm.mwn.de | U4/5 Lehel, tram 17, bus Museum line 100 Nationalmuseum | Tue-Sun 10am-5pm, Thu 10am-8pm, closed Mon | a wide variety of guided tours is available | Tel. 089-21124216 | www.bayerisches-nationalmuseum.de

Münchner Stadtmuseum family

In its new permanent exhibition “Typisch München!” (Typically Munich) the Munich City Museum exhibits documents about the municipal past and deals with topics regarding the development of international civilization and culture ▶ St. Jakobs-Platz 1, 80331 Munich | Tel. 089-233 22370 | stadtmuseum@muenchen.de | U1-3/6 Sendlinger Tor, bus 152 St.-Jakobs-Platz, bus 52 Blumenstr. | Tue-Sun 10am-6pm, closed Mon | www.stadtmuseum-online.de



Architekturmuseum der Technischen Universität München

The Architecture Museum of Munich’s Technical University exhibits architectural photographs from their beginnings to the present day. It impressively explains the topics, tasks and possibilities of photography when it comes to communicating the essence of architecture ▶ Barerstr. 40, 80333 Munich; Arcisstr. 21, 80333 Munich | Tel. 089-289 22493 | archmus@lrz.tum.de | access by public transport and opening hours please refer to Pinakothek der Moderne | exhibition rooms in the Pinakothek der Moderne | www.architekturmuseum.de

Die Neue Sammlung – Staatliches Museum für angewandte Kunst
With its unusual presentation in the Pinakothek, the State Museum for Applied Art takes visitors on a tour of the highlights of design history ▶ Barerstr. 40, 80333 Munich | Tel. 089-2727250 | info@die-neue-sammlung.de | access by public transport and opening hours please refer to Pinakothek der Moderne | www.die-neue-sammlung.de

Sammlung Moderne Kunst

This collection of modern and contemporary art includes first-class paintings and sculptures as well as installations and works from the areas of photography and new media ▶ Barerstr. 40, 80333 Munich | Tel. 089-23805360 | info@pinakothek.de | access by public transport and opening hours please refer to Pinakothek der Moderne | www.pinakothek-der-moderne.de

Staatliche Graphische Sammlung München

The Munich museum ranks among the most important graphics collections in the world. It is accommodated in the Pinakothek der Moderne ▶ Barerstr. 40, 80333 Munich; Katharina-von-Bora-Str. 10, 80333 Munich | Tel. 089-28927616 | info@sgsm.eu | for access by public transport please refer to Pinakothek der Moderne | study hall opening hours: Tue, Wed 10am-1pm and 2pm-5pm, Thu 10am-1pm and 2pm-6pm, Fri 10am-12:30pm | exhibition rooms in the Pinakothek der Moderne | www.sgsm.eu

Museum Brandhorst

Close to the Pinakothek der Moderne the Brandhorst Collection is accommodated in an architecturally dazzling museum. It exhibits more than 700 contemporary works of modern artists, such as Cy Twombly, Damien Hirst and Andy Warhol ▶ Theresienstr. 35a, 80333 Munich | Tel. 089-238052286 | info@museum-brandhorst.de | U2 Königsplatz/Theresienstr., U3/6 Odeonsplatz, U3/6 Universität, bus Museum line 100 Maxvorstadt, tram 27 Pinakotheken | daily except Mon 10am-6pm, Thu 10am-8pm | www.museum-brandhorst.de

Jüdisches Museum München

Together with the Jewish community center and the new synagogue the Jewish Museum is part of the building complex at St.-Jakobs-Platz. Extending over 900 m² of exhibition space the museum grants insight into Jewish history and culture in Munich as an integral part of the city's past ▶ St. Jakobs-Platz 16, 80331 Munich | Tel. 089-23396096 | juedisches.museum@muenchen.de | S1-8, U3/6 Marienplatz, U1-3/6, tram 16-18/27 Sendlinger Tor, bus 152 St.-Jakobs-Platz, bus 52 Blumenstr. | Tue-Sun 10am-6pm, closed Mon | www.juedisches-museum-muenchen.de

Staatliches Museum für Völkerkunde München

With approx. 150,000 exhibits the State Ethnographic Museum encompasses one of the largest and most important ethnographic collections in Germany ▶ Maximilianstr. 42, 80538 Munich | Tel. 089-210136100 | museum.voelkerkunde@extern.lrz-muenchen.de | U4/5 Lehel, S1-8, bus 131 Isartor, tram 17/19 Maxmonument | Tue-Sun 9:30am-5:30pm | www.voelkerkundemuseum-muenchen.de

Deutsches Museum

The Deutsches Museum is located on the museum island in the Isar river. It is the most visited museum in Germany, presenting exhibits about transport, physics, energy and communication ▶ Museumsinsel 1, 80538 Munich | Tel. 089-21791 | information@deutsches-museum.de | U1/2 Fraunhoferstr., S1-8 Isartor, tram 18 Deutsches Museum | daily 9am-5pm, closed on certain holidays | www.deutsches-museum.de

Deutsches Museum Flugwerft Schleißheim

In the historical hangar and the new exhibition hall 7,800 m² of space are dedicated to the topics of technology and history of aerospace. About 60 airplanes and helicopters document historical and modern methods to overcome gravity ▶ Effnerstr. 18, 85764 Oberschleißheim | Tel. 089-3157140 | fws@deutsches-museum.de | S1 Oberschleißheim, daily 9am-5pm, closed on certain holidays | www.deutsches-museum.de/flugwerft



BMW Museum

LA VILLA
im Bamberger Haus

2 Restaurants, 2 Bars, Terrace, Banquet Hall

La Terrazza
Bavarian & International Specialties

Cantina
Mexicana & Churrascaria Brazil

Brunnerstr. 2
80804 München-Schwabing
Phone: (089) 30 88 966
info@restaurant-la-villa.de
www.restaurant-la-villa.de

Since 2013 „ La Villa in Munich´s Bamberger House has been shining with new glamour under new management. Our stylish, historical and charming house centrally situated in Luitpoldpark in very heart of Schwabing, ranks among Munich´s most beautiful locations. The La Villa offers a large sun-deck, surrounded by a scenic garden where the guests can relax in lounge chairs while taking a break and enjoying our fine food.

In our "La Terrazza Bar" we will feast you with multi-facetted Bavarian and international cuisine. Our house specialty – exclusively in Munich – is the Brazilian delicacy RODIZIO. In the historical vaults of the restaurant " Cantina Mexicana & Churrascaria Brazil", seven different barbecue meat specialties are served directly from the skewer at the table and accompanied by a opulent buffet of appetizers, side dishes and salads. This convivial enjoyment with delicious cocktails and Brazilian joy of life is complemented by two dessert courses and is offered in the "ALL YOU CAN EAT " style. This culinary getaway takes you for about two hours in to the taste of authentic South Brazilian cuisine. In Cantina Mexicana you can also indulge yourself in a various selection of fine Mexican meals and steaks.

In our splendid "Luitpoldsaal" we can provide you with the ideal locality for your private parties. A friendly and flexible team will be pleased to fulfill all your culinary desires and service requirements.



Deutsches Museum Flugwerft Schleißheim

Deutsches Museum Verkehrszentrum f@mj|y

Here the visitor is presented with the technical history of human mobility, featuring vehicles from coaches to state-of-the-art subway trains ▶ Theresienhöhe 14a, 80339 Munich | Tel. 089-500806762 | verkehrszentrum@deutsches-museum.de | U4/5, bus 134 Schwanthalerhöhe, bus 131/132 Hans-Fischer-Str. | daily 9am-5pm, closed on certain holidays | www.deutsches-museum.de/verkehrszentrum

BMW Museum

Mobility combined with sportsmanship, elegance, dynamism and passion – this is the BMW Museum. A unique overall collection presents more than 125 of the most important and attractive original examples of the brand ▶ Am Olympiapark 1, 80809 Munich | Tel. 0180-2118822 | infowelt@bmw-welt.com | U3 Olympiazentrum, bus 173 Olympiapark-Eisstadion | Tue-Sun 10am-6pm, closed Mon | www.bmw-museum.de

Museum Mensch und Natur f@mj|y

The Museum of Man and Nature is accommodated in Nymphenburg Palace. It is divided in three subject areas: The history of the earth and its forms of life, biodiversity and man's place within nature and influence on the natural world ▶ Schloss Nymphenburg, 80638 Munich | Tel. 089-1795890 | museum@musmn.de | tram 17, bus 41/51 Schloss Nymphenburg, tram 12/16, bus 151/168 Romanplatz | Tue, Wed, Fri 9am-5pm, Thu 9am-8pm, Sat/Sun/holidays 10am-6pm, closed Mon | www.musmn.de

Alpines Museum des Deutschen Alpenvereins

Located on the Praterinsel the Alpine Museum of the German Alpine Association informs visitors about the mountain world ▶ Praterinsel 5, 80538 Munich | Tel. 089-2112240 | alpines.museum@alpenverein.de | U4/5 Lehel, S1-8 Isartor, tram 17 Mariannenplatz | Tue-Fri 1pm-6pm, Sat/Sun 11am-6pm, closed Mon | www.alpines-museum.de

Bier- und Oktoberfestmuseum

This museum is located in a 650-year old building near the Isartor. Here everything turns around the greatest popular festival in the world and its brew ▶ Sterneckerstr. 2, 80331 Munich | Tel. 089-24231607 | info@Bier-und-Oktoberfestmuseum.de | S1-8 Isartor | Tue-Sat 1pm-6pm, closed Sun | www.bier-und-oktoberfestmuseum.de



Beer- und Oktoberfestmuseum

Spielzeugmuseum f@mj|y

The Munich Toy Museum is located in the tower of the Old Town Hall directly at Marienplatz. The four floors are dedicated to toys from Europe and America which were used by children as early as 1800 ▶ Marienplatz 15, in the tower of the Old Town Hall, 80331 Munich | Tel. 089-294001 | S1-8, U3/6 Marienplatz | daily 10am-5:30pm | www.spielzeugmuseum-muenchen.de

Valentin-Karlstadt-Musäum

The Valentin Karlstadt Musäum at the Munich Isartor is homage to the Munich folk singers who entertained the masses with their comical performances primarily in the 1920s ▶ Tal 50, in the tower of Isartor, 80331 Munich | Tel. 089-223266 | info@valentin-musaeum.de | S1-8, tram 17/18 Isartor | Mon/Tue/Thu 11:01am-5:29pm (closed Wed), Fri/Sat 11:01am-5:59pm, Sun 10:01am-5:59pm | every first Fri of the month evening opening and program until 9:59pm | www.valentin-musaeum.de

Deutsches Jagd- und Fischereimuseum München

The Museum, located in the former Augustinerkirche church, illustrates the history of hunting and fishing and presents, among other things, stuffed wild animals ▶ Neuhauserstr. 2, 80331 Munich | Tel. 089-220522 | info@jagd-fischerei-museum.de | daily 9:30am-5pm, Thu evening opening until 9pm | www.jagd-fischerei-museum.de



Jüdisches Museum (left)

MVG Museum (above)

Museum Reich der Kristalle **famjly**

The Crystal Museum is located near the Pinakotheken. The collection showcases diamonds, precious stones, emeralds and many other types of minerals ▶ Theresienstr. 41, 80333 Munich | Tel. 089-21804312 (morning), or -4310 (afternoon) | mineralogische.staatssammlung@lrz.uni-muenchen.de | U2 Theresienstr., tram 27 Pinakotheken, bus Museum line 100 Pinakotheken, | Tue-Sun 1pm-5pm | extensive program for children and school classes, incl. project days and special guided tours for kids, call 089-2180-4310 or 4312 |

www.mineralogische.staatssammlung.userweb.mwn.de

Staatliche Münzsammlung

The State Coin Collection was founded in 1550 and encompasses about 300,000 items on exhibit ▶ Residenzstr. 1 (entrance Kapellenhof), 80333 Munich | Tel. 089-227221 | info@staatliche-muenzsammlung.de | U3/6, bus Museum line 100 Odeonsplatz | coin collection: Tue-Sun 10am-5pm library: Mon-Thu 9am-4pm, Fri until 2pm | www.staatliche-muenzsammlung.de

Paläontologisches Museum

The Paleontological Museum takes the visitor on a trip to the Stone Age and presents skeletons and other remains of animal species that have long been extinct ▶ Richard-Wagner-Str. 10, 80333 Munich | Tel. 089-21806630 | pal.museum@lrz.uni-muenchen.de | U2 Königsplatz, U1 Stiglmaierplatz, S1-8 Hauptbahnhof (Main Train Station, approx. 10-minute walk) | Mon-Thu 8am-4pm, Fri 8am-2pm, 1st Sun of the month 10am-4pm | www.palmuc.de

Deutsches Theatermuseum

The German Theater Museum is located directly at Odeonsplatz in Munich. As internationally renowned institute it possesses a most comprehensive archive ▶ Galeriestr. 4a (Hofgarten arcades), 80539 Munich | Tel. 089-21069128 | info@deutschestheatermuseum.de | U3/6 Odeonsplatz, S1-8, U3/6 Marienplatz, tram 19 Theatinerstr. | Tue-Sun 10am-4pm | www.deutschestheatermuseum.de

Haus der Kunst **famjly**

The Haus der Kunst on the English Garden ranks among the most outstanding galleries worldwide and presents retrospectives of contemporary artists ▶ Prinzregentenstr. 1, 80538 Munich | Tel. 089-21127113 | mail@hausderkunst.de | U4/5 Lehel, U3/6 Odeonsplatz, tram 17 Bayerisches Nationalmuseum/Haus der Kunst, bus Museum line 100 Königinstr. | Thu 10am-10pm, Fri/Sat/Sun 10am-8pm | www.hausderkunst.de

Kunsthalle der Hypo-Kulturstiftung

The Hypo-Kunsthalle is located in the Fünf Höfe in the heart of the city. Since 2001 the Hypo-Kulturstiftung has presented its art exhibitions here ▶ Theatinerstr. 8, 80333 Munich | Tel. 089-224412 | kontakt@hypo-kunsthalle.de | S1-8, U3/6 Marienplatz, tram 19 Theatinerstr., U3/6, bus 100 Museum line Odeonsplatz | daily 10am-8pm | www.hypo-kunsthalle.de

MVG Museum **famjly**

In the building of the main tram workshop, exhibits such as a horse-drawn tram, omnibuses and subway driving cabs are reminiscent of the history of local municipal transportation ▶ Ständlerstr. 20, 81549 Munich | Tel. 089-6256716 | mvgmuseum@swm.de | tram 27 Schwannseestr., bus 139, 144, 145 Ständlerstr. | On opening days a shuttle bus operates at 30-minute intervals from the Giesing train station. In the summer months weather permitting old-timer buses are used depending on availability | 2nd and 4th Sun of the month 11am-5pm, see website | www.mvg-mobil.de/museum

Rockmuseum München

The Munich Rock Museum is located high above the roofs of the city. Parts of its collection are presented on the observation deck of the Olympic Tower ▶ Besucherplattform des Olympiaturms München, Spiridon-Louis-Ring 7, 80809 Munich | Tel. 0172 8 91 68 81 | herbert.hauke@rockmuseum.de | U3 Olympiazentrum, bus 173 Olympiapark-Eisstadion | Mon-Sun 9am-midnight last ascent 11:30pm | www.rockmuseum.de

Kinder- und Jugendmuseum **famjly**

Interactive exhibitions: The focus is on experiencing with all senses, discovering, experimenting and testing ▶ Arnulfstr. 3, 80335 Munich | Tel. 089-54046440 | Tue-Fri 2pm-5:30pm, Sat/Sun/holidays and Bavarian school holidays 10am-5pm, registered school classes also Tue-Fri 9am or 11am | www.kindermuseum-muenchen.de

MPZ Museums-Pädagogisches Zentrum **famjly**

The Museum Pedagogical Center offers guided tours in numerous Munich museums ▶ Infanteriestr. 1, 80797 Munich | Tel. 089-12122300 | info@mpz.bayern.de | www.mpz.bayern.de

Feuerwehrmuseum **famjly**

The firefighting museum offers guided tours (only starting elementary school age, groups up to 15 persons): History of the fire brigade and demonstration of fire engines ▶ An der Hauptfeuerwache 8 | Tel. 089-23534125 | bfm.pressestelle@ems.muenchen.de | Sat 9am-4pm | www.feuerwehr-museen.de



Lustheim Palace (left)
Porcelain Figurine from the world-renowned Nymphenburg Manufacture (center)
Nymphenburg Palace (right)

Castles

Residenz München (Residenz Museum) *famij*

Once the city palace of the Bavarian dukes, electors and kings, it is now one of the most important museums of interior design in Europe ▶ Residenzstr. 1, 80331 Munich | Tel. 089-290671 | residenzmuenchen@bsv.bayern.de | S1-8, U3/6, bus 52 Marienplatz, tram 19 Nationaltheater, bus Museum line 100 Odeonsplatz | Apr 1-Oct 15: 9am-6pm, Oct 16-Mar 31: 10am-5pm, open daily | Due to restoration work the Königsbau (King's Tract) and the collection of 19th century porcelain cannot be visited at the moment | www.residenz-muenchen.de

Residenz München (Treasury) *famij*

The Treasury of the Munich Residenz presents unique goldsmith art from the Middle Ages to Classicism ▶ Residenzstr. 1, 80331 Munich | Tel. 089-290671 | residenzmuenchen@bsv.bayern.de | S1-8, U3/6, bus 52 Marienplatz, tram 19 Nationaltheater, bus Museum line 100 Odeonsplatz | Apr 1-Oct 15: 9am-6pm, Oct 16-Mar 31: 10am-5pm, open daily | www.residenz-muenchen.de

Residenz München (Cuvilliés-Theater) *famij*

Munich owes its most splendid Rococo gem to the Walloon architect François Cuvilliés Sr.: the Old Residence Theater. Subsequent to its destruction during World War II the theater was rebuilt incorporating the preserved painted wooden carvings and tier fittings ▶ Residenzstr. 1, 80331 Munich | Tel. 089-290671 | residenzmuenchen@bsv.bayern.de | S1-8, U3/6, bus 52 Marienplatz, tram 19 Nationaltheater, bus Museum line 100 Odeonsplatz | Apr 1-July 31: Mon-Sat 2pm-6pm, Sun/holidays 9am-6pm, Aug 1-Sep 16: daily 9am-6pm, Sep 17-Oct 15: Mon-Sat 2pm-6pm, Sun/holidays 9am-6pm, Oct 17-Mar 31: Mon-Sat 2pm-5pm, Sun/holidays 10am-5pm, closed Sep 8-16 | www.residenz-muenchen.de

Schloss and Park Nymphenburg With the Marstallmuseum and Nymphenburg Porcelain Collection, Palace Park and Pavilions *famij*

The expansive Baroque palace in the western part of Munich was built as summer residence for the Bavarian electors. The palace ranks among the largest royal castles in Europe ▶ Schloss Nymphenburg entrance 1, 80638 Munich | Tel. 089-179080 | info@bsv.bayern.de | tram 17, bus 51 Schloss Nymphenburg, tram 12/16, bus 151 Romanplatz | Apr 1-Oct 15: 9am-6pm, Oct 16-Mar 31: 10am-4pm | The pavilions Badenburg, Pagodenburg, Amalienburg and Magdalenenklause are closed in winter | www.schloss-nymphenburg.de

Neues Schloss and Hofgarten Schleißheim *famij*

The New Schleißheim palace presents a Baroque extension of the Old Schleißheim palace. The Schleißheim palace park ranks among the most important European Baroque gardens

▶ Max-Emanuel-Platz 1, 85764 Oberschleißheim | Tel. 089-3158720 | sgvschleissheim@bsv.bayern.de | S1 Oberschleißheim | Apr-Sep: 9am-6pm, Oct-Mar: 10am-4pm, **Neues Schloss closed Mon** | www.schloesser-schleissheim.de

Altes Schloss Schleißheim

The original palace built on behalf of Duke Maximilian I accommodates a branch of the Bavarian National Museum ▶ Maximilianshof 1, 85764 Oberschleißheim | Tel. 089-3158720 | sgvschleissheim@bsv.bayern.de | S1 Oberschleißheim | Apr-Sep: 9am-6pm, Oct-Mar: 10am-4pm, closed Mon | www.schloesser-schleissheim.de

Schloss Lustheim *famij*

The Lustheim palace belongs to the ensemble of the Baroque Schleißheim palace complex in the northern region of Munich

▶ Max-Emanuel-Platz 1, 85764 Oberschleißheim | Tel. 089-3158720 | sgvschleissheim@bsv.bayern.de | S1 Oberschleißheim | Apr-Sep: 9am-6pm, Oct-Mar: 10am-4pm, closed Mon | www.schloesser-schleissheim.de

Renatuskapelle

This genuine gem of a chapel was virtually inaccessible for decades. After the completion of restoration by the palace management it is again open to the public ▶ Max-Emanuel-Platz 1, 85764 Oberschleißheim | Tel. 089-3158720 | sgvschleissheim@bsv.bayern.de | S1 Oberschleißheim | Apr-Sep: 9am-6pm, closed Mon, Oct-Mar: closed | www.schloesser-schleissheim.de

Infopoint Museen & Schlösser in Bayern

At the Infopoint Museums & Castles in Munich you will find up-to-date and comprehensive information about Bavarian museums for tourists and residents ▶ Alter Hof 1, 80331 Munich | Tel. 089-21014050 | infopoint@museen-in-bayern.de | U3/6, S1-8, bus 52 Marienplatz, tram 19 Nationaltheater | Mon-Sat 10am-6pm, closed Sun/holidays | www.infopoint-museen-bayern.de



Sightseeing Tours

View of the City and the Town Hall (top)
Walking Man Sculpture in Leopoldstrasse (center)
Below: City Tour by Bus (left)
City Tour (right)





Main Synagogue "Ohel Jakob"
and Saint Peter's (I.)

Glockenspiel at the
Neues Rathaus (bottom r.)

München Tourismus *fAmily*

Individual city tours, walks, themed tours, day excursions for groups with the official visitor guides of the City of Munich. 29 languages

► Sendlinger Str. 1, 80331 Munich | Tel. 089-233-30234 or 233-30204 | tourismus.guides@muenchen.de | For small and large groups. Walks suitable for wheelchair users and visually impaired visitors. Groups only | www.muenchen.de/guides

München Tourismus *fAmily*

Individual tours with a trained taxi guide, up to 7 persons. 10 languages

► Sendlinger Str. 1, 80331 Munich | Tel. 089-233-30234 or 233-30204 | tourismus.guides@muenchen.de | day excursions also possible | www.muenchen.de/guides

Taxi Guide Munich *fAmily*

Individual tours with a trained taxi guide, up to 7 persons. 10 languages

► Tel. 0175-4812848 | info@taxi-guide-muenchen.de | 24-hour service | www.taxi-guide-muenchen.de

München Tourismus *fAmily*

Individual city walks for groups with a trained sign language guide

► Sendlinger Str. 1, 80331 Munich | Tel. 089-233-30234 or 233-30204 | tourismus.guides@muenchen.de | for groups of up to 15 persons | www.muenchen.de/guides

Münchner Stadt-Rundfahrten (Munich City Tours) *fAmily*

Hop-On Hop-Off tours and themed tours ► Schützenstr. 9, 80331 Munich | Tel. 0700-28786877 | info@sightseeing-munich.com | daily tours | www.sightseeing-munich.com

Münchner Stadtführungen (Munich City Walks) *fAmily*

Tours of the old town, themed walks, bicycle tours, excursions

► Thomas-Wimmer-Ring 1, 80539 Munich | Tel. 089-24231767 | touren@muenchen-stadtfuehrungen.de | daily tours; tickets also available at the tourist information centers at the Main Train Station (Hauptbahnhof) and Marienplatz | www.muenchenstadtfuehrungen.de

Stattreisen München e.V. *fAmily*

Tours of the old town, themed walks ► Frauenlobstr. 24, 80337 Munich | Tel. 089-54404230 | info@stattreisen-muenchen.de | Special walks for groups of blind and visually impaired visitors | www.stattreisen-muenchen.de

City Segway Tours

City tours by Segway ► Karlsplatz 4, 80335 Munich | Tel. 089-23888798 | munich@citysegwaytours.com | All tours begin with a comprehensive familiarization with the device | www.citysegwaytours.com/munich

Segway Tour München

City and discovery tours by Segway | daily tours – three different routes ► Herrmstr. 13, 80539 Munich | Tel. 089-24203401 | info@segwaytour-munich.de | www.Seg-Tour-Munich.de



Explore Munich by Segway!

See the sights like never before.



Karlsplatz 4, 80335 München
089 - 23 88 87 98
munich@CitySegwayTours.com

www.CitySegwayTours.com

38 Sightseeing Tours

Münchner Bildungswerk e.V. family

Tours of the old town, themed walks, church tours ▶ Dachauer Str. 5, 80335 Munich | Tel. 089-545805-15 | mbw@muenchner-bildungswerk.de | guided tours from May to Sep | www.muenchner-bildungswerk.de

Münchner Volkshochschule family

Guided tours, museum workshop ▶ P.O. Box 80 11 64, 81667 Munich | Tel. 089-44478051 | fuehrungen@mvhs.de | www.mvhs.de

Spurwechsel Stadtführungen & Veranstaltungen GmbH family

Bicycle tours, themed tours, party tram, city rallies

▶ Ohlmüllerstr. 5, 81514 Munich | Tel. 089-6924699 | info@spurwechsel-muenchen.de | bicycles for city tours are available for rental; "open" tours from April to October | www.spurwechsel-muenchen.de

Weis(s)er Stadtvoegel München family

Tours of the old town, themed walks, costume tours, bicycle tours

▶ Unterer Anger 14, 80331 Munich | Tel. 089-203245360 | info@weisser-stadtvoegel.de | daily tours | www.weisser-stadtvoegel.de

Radius Tours family

Bicycle tours ▶ Munich Main Train Station (Hauptbahnhof) near track 32 |

Tel. 089-5434877740 | tours@radiustours.com | www.radiustours.com

Kutscherei Holzmann family

Rides through the English Garden in a horse-drawn carriage

▶ Schwere-Reiter-Str. 22 | Tel. 089-180608 | www.kutschen-muenchen.de

Rikscha-Mobil GmbH & Co.KG family

City tours with bicycle-rickshaw-taxis, shuttle service

▶ Müllerstr. 6, 80469 Munich | Tel. 089-24216880 | info@pedalhelden.de | Conference bike for 7 persons, bicycle rental | www.pedalhelden.de

Fahrradverleih am Isartor family

Rental of city bikes, bikes for kids, mountain bikes, bicycle baskets,

seats for children ▶ Thomas-Wimmer-Ring 1, 80539 Munich | Tel. 089-24231767 | info@muenchner-stadtfuehrungen.de | S1-8 Isartor | www.munichwalktours.de

Spurwechsel Stadtführungen & Veranstaltungen GmbH family

City and trekking bikes, bikes for kids, bicycle trailers, seats for

children, helmets, etc. ▶ Ohlmüllerstr. 5, 81514 Munich | Tel. 089-6924699 | info@spurwechsel-muenchen.de | U2 Fraunhoferstr., tram 27 Eduard-Schmid-Str. | booking also possible by phone and online | www.spurwechsel-muenchen.de

Radius Radverleih family

More than 150 rental bicycles, bicycle locks, baskets, seats for

children, city maps ▶ At the Main Train Station (Hauptbahnhof) near track 32 |

Tel. 089-5434877730 | info@radiustours.com | S 1-8, U1/2/4/5 Hauptbahnhof | www.radiustours.com

Stadtvoegel Fahrradverleih family

Rental of city bikes, bicycle locks, baskets, city baskets

▶ Unterer Anger 14, 80331 Munich | Tel. 089-203245360 | info@weisser-stadtvoegel.de | S 1-8, U3/U6 Marienplatz, U1-3/6 Sendlinger Tor | booking also possible by phone and online | www.weisser-stadtvoegel.de

Welcome to Munich



Café am Marienplatz
Marienplatz 18
80331 München

Rischart
wo's duftet und schmeckt



Top:
Nymphenburg Palace Park (left)
at the foot of Monopteros in the
English Garden (right)



Naturally Munich

Olympic Park

Botanical Garden





In the English Garden

Bottom:
Bathing in the
Isar River

Sunbathing/Bathing

Brooks, rivers and lakes within the metropolitan area invite people to bathe in the water and under the sun

Isarauen/Flaucher

Magnificent gravel banks along a mountain river in the heart of metropolitan Munich ▶ U3 Thalkirchen

Langwieder See

Cleanest of all Munich lakes. Restaurants, kiosk, miniature golf
▶ S3 Langwied

“The Lake Plateau”

Fasanerie, Feldmoching & Lerchenau lakes in the northwest of Munich
▶ S1 Fasanerie, S2, U2 Feldmoching

Riemer Park *family*

Exhibition site of the German National Garden Show in 2005: bathing lake, flower shows, space for sports and recreation
▶ U2 Messestadt Ost, S4 Gronsdorf, bus 139/189/190 Messestadt West

Ostpark

Young and modern park in the southeast of Munich
▶ U5 Michaelibad

Westpark

Site of the International Horticultural Exhibition in 1983: lakeside stage, concerts, East Asian ensemble
▶ U6 Westpark

Nymphenburg Palace Park

Park with stately trees and romantic pavilions
▶ Tram 17 Schloss Nymphenburg

English Garden

World's largest park within a city

▶ U3/6 Universität, Giselastr., Münchner Freiheit, U6 Dietlindenstr., Nordfriedhof, Alte Heide, Studentenstadt

Carriage Rides in the English Garden

▶ Lohnkutscherei H. Holzmann | Schwere-Reiter-Str. 22, 80797 Munich | Tel. 089-180608 | daily starting at noon | www.kutschen-muenchen.de

Boat Rental Seehaus

▶ Kleinhesselohle 4, 80802 Munich | Tel. 089-338353

Boat Rental Hinterbrühler See

▶ Tel. 089-795269

Boat Rental Olympiasee

▶ Spiridon-Louis-Ring, am Olympiasee, 80809 Munich | Tel. 089-30672816

Botanischer Garten *family*

One of the most beautiful botanical gardens in Europe

▶ Menzinger Str. 65, 80638 Munich | Tel. 089-17861316 | info@botmuc.de | tram 17
Botanischer Garten | Nov-Jan: 9am-4:30pm, Feb/Mar/Oct: 9am-5pm, Apr/Sep: 9am-6pm,
May-Aug: 9am-7pm | www.botmuc.de

Tierpark Hellabrunn *family*

Founded as the world's first “geo(graphical)” zoo in 1911 ▶ Tierparkstr. 30, 81543 Munich | Tel. 089-625080 | office@tierpark-hellabrunn.de | U3 Thalkirchen, bus 52
Tierpark | Apr-Sep: 9am-6pm, Oct-Mar: 9am-5pm | www.tierpark-hellabrunn.de

Guided Nature Tours – Spurwechsel

▶ NaTour, IsarTour | Ohlmüllerstr. 5, 81541 Munich | Tel. 089-6924699 | info@spurwechselmuenchen.de | www.spurwechsel-muenchen.de

Munich Green and Ecological – Statterreisen

▶ Statterreisen München e.V. | Frauenlobstr. 24, 80337 Munich | Tel. 089-54404230 | info@statterreisen-muenchen.de | www.statterreisen-muenchen.de

Grünwald Forest Experience

Feeding of wild boars daily at 4pm

▶ Grünwalder Sauschütt, 82031 Grünwald | Tel. 089-6492099 | poststelle@fowez-m.bayern.de | S7 Höllriegelskreuth | Mon-Fri 8am-4.30pm, Sat/Sun 11am-4.30pm | www.walderlebniszentrum-gruenwald.de

Nature Reserves

Schwarzhölzl, Allacher Wald, Panzerwiese

▶ S2 Dachau or Karlsfeld, U2 Dülferstr.





Excursions



Boat Ride on Lake Ammersee



Zugspitze Mountain

Schloss Linderhof

Linderhof palace, “the Royal Villa”; its imposing park is a smaller-scale version of the Versailles gardens ▶ Tel. 08822-920349 | sgvlinderhof@bsv.bayern.de | Autobahn A95 Garmisch-Partenkirchen, Bundesstrasse B2 to Oberau, B2 direction of Ettal, Staatsstrasse 2060 | Apr 1-Oct 15: 9am-6pm, Oct 16-Mar 31: 10am-4pm, open daily, closed: Jan 1, Shrove Tuesday, Dec 24/25/31 | www.linderhof.de | www.schlosslinderhof.de

Schloss Neuschwanstein

Neuschwanstein, “the Fairytale King’s Castle”; ranks among the most visited royal residences in Europe ▶ Tel. 08362-93083-0 | sgvnenschwanstein@bsv.bayern.de | Autobahn A7 – exit Kempten, Bundesstrasse B12 to Marktoberdorf, via B16 to Roßhaupten, then on to Schwangau and Hohenschwangau | Apr 1-Oct 15: 9am-6pm, Oct 16-Mar 31: 10am-4pm, open daily, closed: Jan 1, Dec 24/25/31 | www.neuschwanstein.de

Hohenschwangau

Ludwig II and the Wittelsbach dynasty in Hohenschwangau Palace as well as in the Museum of the Bavarian Kings ▶ Tel. Hohenschwangau Palace 08362-93083-0 | Tel. Museum of the Bavarian Kings 08362-926464 | info@ticket-center-hohenschwangau.de, museum@hohenschwangau.de | A7 – Kempten exit, Bundesstrasse B12 to Marktoberdorf, via B16 to Rosshaupten, then on to Schwangau and Hohenschwangau | Palace: Apr 1- Oct 15, 9am-6pm; Oct 16- Mar 31, 10am-4pm; open daily; closed Dec 24 | Museum: Apr 1-Sept 30, 9am-7pm; Oct 1- Mar 31, 10am-6pm | www.hohenschwangau.de

Berchtesgaden/Königssee

Old world houses, the castle as well as the Collegiate Church of Saint Peter and John mark the historical center of Berchtesgaden. Surrounded by sheer rock walls Lake Königssee is situated at the heart of the national park ▶ Tel. 08652-656-5050 | info@berchtesgadener-land.com | Autobahn A8 Salzburg – Bad Reichenhall – Berchtesgaden – Königssee | www.berchtesgadener-land.com

Murnau

World-renowned artists like Kandinsky, Münter and Horváth lived in Murnau and sought inspiration from the picturesque lakes and marshland against the backdrop of the Bavarian Alps ▶ Tel. 08841-61410 | info@murnau.de | Autobahn A95 Garmisch-Partenkirchen – Murnau | www.murnau.de

Schliersee

The Schliersee and the mountain lake Spitzingsee (altitude: 1,085m) are known for their outstanding water quality and attract bathers in summer. Nearby: Markus Wasmeier, Bauernhof- und Wintersportmuseum (Museum of Farming and Winter Sports) ▶ Tel. 08026-60650 | tourismus@schliersee.de | by train or by car: Autobahn A8 Salzburg – Schliersee – Spitzingsee | www.schliersee.de | www.wasmeier.de

Brauneck

The Brauneck skiing and hiking region is located in the picturesque Isarwinkel near the town of Lenggries. Take the Brauneck mountain railway to explore one of Bavaria’s most beautiful mountains for a breathtaking leisure time experience ▶ Tel. mountain railway 08042-503940 | info@brauneck-bergbahn.de | Autobahn A8 Salzburg – Tegernsee, B13 to Lenggries | www.brauneck-bergbahn.de

Tegernsee

Ships criss-cross the lake all year round. The Bavarian spa of Bad Wiessee on the western shore boasts a casino. Rottach Egern on the southern lake shore has a picturesque old town center. In Tegernsee on the eastern shore is the castle of the same name ▶ Tel. 08022-180140 | info@tegernsee.de | Autobahn A8 Salzburg – Tegernsee | www.tegernsee.de

Zugspitze/Garmisch-Partenkirchen

Highest peak in Germany culminating at 2,964m above sea level. Popular destination and winter sports region. Adventure world Garmisch-Classic with the viewing platform AlpSpIX and the summit adventure trail on the AlpSpitz mountain ▶ Tel. Tourist Information 08821-0180700, Tel. Zugspitzbahn 08821-7970 | rathaus@gapa.de | zugspitzbahn@zugspitze.de | Autobahn A95 Garmisch-Partenkirchen | www.zugspitze.de | www.garmisch-partenkirchen.de

Walchensee

This popular hiking and water sports region features a mountain railway that takes visitors to the summit of Herzogstand, one of the most beautiful lookout peaks in Bavaria. In summer 2008 the movie "Wickie the Mighty Viking" was produced by Michael "Bully" Herbig on Lake Walchensee. The Kochel community has preserved part of the movie set on the lake and rebuilt it in Walchensee ▶ Tel. 08858-411 | info@walchensee.de | Autobahn A95 Garmisch-Partenkirchen – Murnau – Walchensee | www.walchensee.de | www.herzogstandbahn.de

Aying

Idyllic town on the outskirts of Munich. The brewery which was founded in 1878 can be visited all year round. Aying brewing experience: ▶ Tel. 08095-9095-0 Tourist Information | gemeinde@aying.bayern.de, brauerei@aying.de | S6 Aying | www.aying-bier.de

Therme Erding

Europe's greatest spa world: fun on 20 water slides, exotic thermal paradise with vital oasis and largest sauna paradise in the world with Royal Day Spa ▶ Thermenallee 1-5, 85435 Erding | Tel. 08122-2270-0 | willkommen@therme-erding.de | A94 Pastetten-Markt Schwaben exit, B388 Erding-Süd | www.therme-erding.de

Stamberger See/Ammersee

After Chiemsee the largest lakes in Bavaria. The Bayerische Seenschiffahrt (Bavarian Steamboat Company) offers scheduled service as well as special tours ▶ Tel. 08151-90600 | info@sta5.de | S6 Starnberg, S5 Herrsching | www.sta5.de

Andechs

Beer garden with famous monastery beer and pilgrimage church on the "Holy Mountain". Monastery/brewery ▶ Tel. 08152-3760 | info@andechs.de | S8 Herrsching, then shuttle bus | www.andechs.de



Wieskirche Church

Chiemsee

One of the most beautiful and diverse vacation regions in Upper Bavaria with plenty of opportunities for hiking, biking, swimming and sailing ▶ Tel. 08051-965550 | info@chiemsee-alpenland.de | Autobahn A8 Salzburg – Prien | www.chiemsee-alpenland.de

Herrenchiemsee Palace and Fraueninsel Island

The splendid palace of King Ludwig II is located on Herreninsel island in Lake Chiemsee. Particularly charming is the nearby Fraueninsel island with its Benedictine monastery Frauenwörth and the romantic gardens ▶ Tel. Herrenchiemsee Palace 08051-68870 | Tel. Frauenwörth 08054-9070 | info@chiemsee-alpenland.de | Transfer by ferry with Chiemsee Schifffahrt | Autobahn A8 Salzburg – Prien | www.herrenchiemsee.de, www.frauenwoerth.de

Prien am Chiemsee

The largest town on the western bank of Lake Chiemsee in Bavaria's alpine foothills. The port of Prien/Stock offers direct connection to Herreninsel and Fraueninsel islands ▶ Tel. 08051-69050 | info@tourismus.prien.de | Autobahn A8 Salzburg – Prien | www.tourismus.prien.de

Dachau/Concentration Camp Memorial

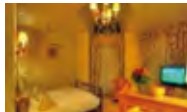
One of the primary sights is Dachau castle with its fine wooden Renaissance ceiling and collection of paintings. In 1933 the first concentration camp in Germany was set up in Dachau. Today this site is a place of remembrance with museum, archive and library ▶ Tourist Information of the City of Dachau | Tel. Tourist Information: 08131-75-287, Tel. Concentration Camp Memorial: 08131-669970 | Tourist Info: info@buero@dachau.de, Concentration Camp Memorial: info@kz-gedenkstaette-dachau.de | S2 Dachau, take bus 726 to the memorial ("Gedenkstätte") | daily 9am-5pm, free admission | www.dachau.de | www.kz-gedenkstaette-dachau.de

Freising

The oldest town on the Isar river boasts numerous outstanding religious and secular buildings, such as the Romanesque cathedral and diocesan museum remodeled in the Baroque style by the Asam brothers. Freising prides itself on the oldest brewery in the world – the Weihenstephan state brewery ▶ Tel. 08161-5444111 | touristinfo@freising.de | S1 Freising | www.freising.de



- ****Sterne Garni klassifiziert
- 46 Zimmer/ knapp 100 Betten
- freundliches Team
- reichhaltiges Frühstücksbuffet
- kostenloses W-LAN
- ideale S-Bahnanbindung (300 m)
- Top-Autobahnanbindung (3 km)
- Hotelbar, Terrasse & Innenhof
- Tiefgarage & am Hotel kostenlose Parkplätze
- Willkommensdrink
- Tagungsräume
- Restaurant in der Nähe



www.hotel-central-dachau.de HOTEL CENTRAL DACHAU Telefon: 0 81 31/ 5 64 - 0
info@hotel-central-dachau.de Münchner Straße 46a Dachau Telefon: 0 81 31/ 5 64 - 121
 85221 Dachau

Bad Tölz

Spa on the Isar river with extensive water park and picturesque old town. "Home" of the "Cop from Tölz", a popular German television series ▶ Tel. 08041-78670 | info@bad-toelz.de | Autobahn A8 Salzburg – Holzkirchen – Bad Tölz, Autobahn A95 Garmisch-Partenkirchen – Wolfratshausen – Bad Tölz | www.bad-toelz.de

Altötting

The town has been the spiritual center of Bavaria for 1,250 years and Germany's most visited Marian pilgrimage site for more than 500 years. Every year more than one million pilgrims come to pay their respects to the Black Madonna standing in the octagon of the Gnadenkapelle (Chapel of Mercy) ▶ Tel. 08671-506219 | touristinfo@altoetting.de | Bundesstrasse B12 Passau – Altötting | www.altoetting.de

Innsbruck/Swarovski Crystal Worlds

In addition to the picturesque town center the nearby Swarovski Crystal Worlds cast their spell on visitors ▶ Innsbruck Tourismus | Tel. Tourist Information: +43 512-59850, Tel. Crystal Worlds: +43 5224-51080 | office@innsbruck.info | Autobahn A12 – Innsbruck, Crystal Worlds: Autobahn A12 Innsbruck – Wattens | Swarovski Crystal Worlds: daily 9am-6:30pm | www.innsbruck.info | www.kristallwelten.swarovski.com

Wieskirche

Beautiful pilgrimage church and UNESCO World Heritage Site ▶ Pfarramt Wieskirche | Wies 12, 86989 Steingaden | Tel. 08862-93293-0 | Autobahn A96 Lindau – Landsberg, then Bundesstrasse Füssen – Steingaden | www.wieskirche.de

Buchheim Museum

Nature, art and architecture – the Buchheim Museum is an experience for all senses ▶ Museum der Phantasie | Am Hirschgarten 1, 82347 Bernried | Tel. 08158-99700 | info@buchheimmuseum.de | S6 Tutzing | Apr-Oct: daily except Mon 10am-6pm, Nov-Mar: daily except Mon 10am-5pm | www.buchheimmuseum.de

Glentleiten

In an area covering about 25 hectares, visitors can learn interesting facts about the rural and pre-industrial history of Upper Bavaria ▶ An der Glentleiten 4, 82439 Großweil | Tel. 08851-1850 | freilichtmuseum@glentleiten.de | Autobahn A95 Garmisch-Partenkirchen – Murnau | Tue-Sun 9am-6pm, Jun-Sep: also open Mon, winter break: mid-Nov to mid-Mar | www.glentleiten.de

Legoland

An hour's ride away from Munich, Legoland Germany is a miniature world made entirely of Lego blocks. A delight for young and old ▶ LEGOLAND Allee 2, 89312 Günzburg | Tel. 01806-70075701 | info@legoland.de | Autobahn A8 Stuttgart – Günzburg | www.legoland.de

Salzburg

The Hohensalzburg fortress towers above Mozart's birthplace. Schloss Mirabell and its garden, the Getreidegasse, the cathedral and Mozart's birthplace are only a few of the numerous points of interest ▶ Tel.+43 662-88987-0 | tourist@salzburg.info | Autobahn A8 Salzburg | www.salzburg.info



SIGHTseeing

»The Original since 1890

Welcome to Munich and Bavaria

Online booking:

www.sightseeing-munich.com

Informations/Reservations: +49 89 54 90 75 60



Lake Tegernsee



Regensburg

Bad Reichenhall Saltworks & Time Travel in Berchtesgaden

A tour of the old salt works and the salt museum takes visitors back in time to the origins of salt mining in Bad Reichenhall. In the Adventure Mine in Berchtesgaden, a hidden world deep in the Salzberg ("salt mountain") is waiting to be discovered

► Info line: Tel. 08651-7002-146 | info@saline-bad-reichenhall.de | Autobahn A8 Salzburg, exit Bad Reichenhall | May-Oct: daily 10am-11.30am and 2pm-4pm, Nov-Apr: Tue-Fri 10am-11.30am and 2pm-4pm, every 1st Sun of the month 2pm-4pm |

www.alte-saline-bad-reichenhall.de

Nuremberg

Bavaria's second largest city with a splendid historical center. Main attractions include the medieval castle, Albrecht Dürer's house and the Documentation Center Nazi Party Rally Grounds ► Tel. 0911-23360 | tourismus@nuernberg.de | Autobahn A9 Nürnberg | www.tourismus.nuernberg.de

Ingolstadt

Bustling city on the Danube and home of the first Bavarian university. The historical old town and the Audi Forum are worth seeing

► Tel. 0841-3053030 | Autobahn A9 Ingolstadt | www.ingolstadt-tourismus.de

Neuburg an der Donau

The city is charmingly situated in the Danube valley. The State Gallery of Neuburg an der Donau displays about 150 works of the Flemish Baroque gallery including the most renowned paintings by Rubens

► Tel. 08431-55240 | tourist@neuburg-donau.de | Autobahn A9 Berlin – Manching, take Bundesstrasse 16 Donauwörth – Neuburg an der Donau | approx. 95 km, 1 hour drive |

www.neuburg-donau.de

Oberammergau

Stately mountain site, world-famous as village of the "god carvers" and its passion plays which are performed every ten years

► Tel. 08822-922740 | info@oberammergau.de | Autobahn A95 München-Garmisch-Partenkirchen, end of highway, then take Bundesstrasse 2, Oberau, B23 |

www.ammergauer-alpen.de

Ettal Monastery

Benedictine abbey in the Upper Bavarian village of Ettal, southeast of Oberammergau, with imposing Baroque basilica and Rococo sacristy

► Kaiser-Ludwig-Platz 1, 82488 Ettal | Tel. 08822-740 | Autobahn A95 München-Garmisch-Partenkirchen to the end of the highway, then continue on Bundesstrasse 2, Oberau, B23 | www.abtei.kloster-ettal.de

Skyline Park

The extensive theme park presents not just fun and entertainment for children, but also action for adolescents and adults

as well as recreation for senior visitors. The numerous attractions range from a cozy Ferris wheel to a wild sky wheel and a go-kart track

► Tel. 01805-884880 | info@skylinepark.de | Autobahn A96 München-Lindau, exit Bad Wörishofen | www.skylinepark.de

Regensburg

Since 2006 UNESCO World Heritage Site. Best-preserved Medieval city in Germany with more than 1,000 high-class buildings, oldest preserved stone bridge in Germany and Saint Peter's Cathedral

► Tel. 0941-507-4410 | tourismus@regensburg.de | Autobahn A9 Nürnberg, then A93 direction of Regensburg | www.regensburg.de/tourismus

Augsburg

The Fugger family and the seafaring Welser family turned Augsburg into a cosmopolitan city, into a town of emperors and the Diet, into a haven for famous painters, sculptors and musicians. Spacious streets, monumental fountains and representative public buildings mark the skyline

► Tel. 0821-50207-0 | tourismus@regio-augsburg.de | Autobahn A8 Stuttgart | Railway: hourly directly from Munich | www.augsburg-tourismus.de

HIGHWAY
MÜNCHEN-LINDAU A96
EXIT: BAD WÖRISHOFEN
BY CAR: 40 MINUTES
AWAY FROM MUNICH

skyline Park
www.skylinepark.de

EVENTS OF THE CITY OF MUNICH



City Foundation Festival

June 14-15, 2014

Munich celebrates its 856th birthday with a two-day international festival between Marienplatz und Odeonsplatz squares.

www.stadtgruendungsfest-muenchen.de

Oktoberfest

Sep 20-Oct 5, 2014

The world's largest folk festival held on the grounds of Theresienwiese.

www.oktoberfest.eu

Auer Dulzen

Maidult Apr 26-May 4
Jakobidult July 26-Aug 3
Kirchweihdult Oct 18-Oct 26

Traditional fairs held at Mariahilfplatz square in Munich's Au district.

www.aerduelt.de

Christmas Market

Nov 27-Dec 24, 2014

Munich's traditional Christmas Market at Marienplatz square. A huge illuminated Christmas tree towers over the charming booths. Every day at 5:30pm visitors can listen to advent music from the balcony of the town hall.

www.christmasmarket-munich.de



Munich Airport (top)
Television Tower in the Olympic Park (left)

Specials

BMW Welt





**OLYMPIC PARK.
GREAT EXPERIENCE.**
OLYMPIAPARK.DE

TOURS AND SIGHTSEEING

ADVENTURE OLYMPIC PARK

ROOF CLIMB // 40 m ABSEILING // 200 m FLYING FOX
STADIUM TOUR // ADVENTURE TOUR // OLYMPIC TOWER



ALSO
AVAILABLE AS
GIFT
VOUCHER

For Information and Reservations please contact the Visitors' Service
Phone: +49 (0)89 3067-2414 / -2415, besucherservice@olympiapark.de
www.muenchenticket.de



Bavarian State Opera

Bayerische Staatsoper

Guided tours of the National Theater ▶ Max-Joseph-Platz 2, 80539 Munich | Tel. 089-218501 | marketing@st-oper.bayern.de | S1-8, U3/6 Marienplatz, U3/6 Odeonsplatz, tram 19 Nationaltheater | www.bayerische-staatsoper.de

Bavaria Filmstadt family

Come and take a look behind the scenes of the Bavaria Studios in Munich's famous "Film City" in Geiselgasteig ▶ Bavariafilmplatz 7, 82031 Geiselgasteig | Tel. 089-64992000 | tram 25 Bavariafilmplatz | Mar-Nov: 9am-6pm, several guided tours per hour; Nov-Mar: 10am-5pm, in summer additional tour in English at 1pm | www.filmstadt.de

Tierpark Hellabrunn family

First "geo(graphical)" zoo in the world – one of Munich's top attractions located in the landscape conservation area of the Isar floodplains ▶ Tierparkstr. 30, 81543 Munich | Tel. 089-625080 | office@tierpark-hellabrunn.de | U3 Thalkirchen (Tierpark), bus 52 Tierpark | Apr-Sep: 9am-6pm, Oct-Mar: 9am-5pm, open daily | various guided tours are offered | www.tierpark-hellabrunn.de

Olympiapark family

For the 20th Summer Olympic Games in 1972 a sports landscape extending over 3km² was established in the north of Munich ▶ Spiridon-Louis-Ring 21, 80809 Munich | Tel. 089-30670 | info@olympiapark.de | U3 Olympiazentrum, bus 173 Olympiapark-Eisstadion | The park is always accessible, the tower is open daily from 9am to midnight (last ascent 11:30pm) | various guided tours are offered | www.olympiapark-muenchen.de

Flughafen München family

The airport tour shows visitors all around Munich airport in 50 minutes ▶ Flughafen München GmbH, 85326 Munich | Tel. 089-97541333 | besucherservice@munch-airport.de | S1/8 Besucherpark, 800m walk, bus 653 Freising-Flughafen | Information center: Mar-Oct: 9:30am-6pm, Nov-Feb: 9:30am-5pm, closed Dec 24/25/31 and Jan 1 | www.munich-airport.de/airportour

Zaubertheater München

Close-up experience of the magical show; the magician sits with the audience at the magic table ▶ Unterer Anger 3, 80331 Munich | Tel. 089-37003464 | info@magic-theater.de | www.zaubertheater-muenchen.de

SEA LIFE München *f*amily

Munich's SEA LIFE lures visitors of all ages into the underwater world, from the Isar to the Danube river, from the Mediterranean to the Black Sea ▶ Willi-Daume-Platz 1 (opposite the Olympic Ice Stadium), 80809 Munich | Tel. 089-450000 | muenchen@sealife.de | U3 Olympiazentrum, bus 173 Olympiapark-Eisstadion | open daily, last admission one hour prior to closing | www.visitsealife.com/munchen/en

BMW Welt *f*amily

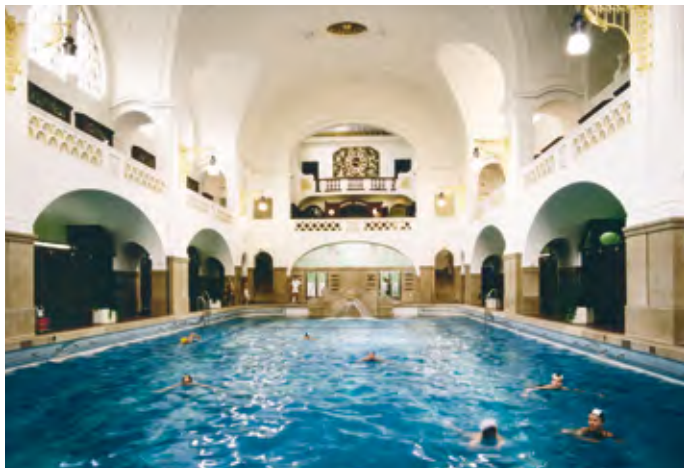
The BMW Welt is the experience and delivery center of the BMW brand of automobiles. It fascinates its visitors through its unique futuristic architecture and the broad range of exhibitions and events ▶ Gastronomy, Junior Campus, BMW Welt guided tours, events | Am Olympiapark 1, 80809 Munich | Tel. 089-1250-160-01 (6 cents per call from German landline) | infowelt@bmw-welt.de | U3 Olympiazentrum, bus 173 Olympiapark-Eisstadion | Mon-Sun 9am-6pm, closed Dec 24/25/26/31 and Jan 1 | www.bmw-welt.de

Allianz Arena München *f*amily

At 258m in length, 227m in width and 50m in height the oval-shaped venue seats up to 69,000 spectators ▶ Werner-Heisenberg-Allee 25, 80939 Munich | Tel. 089-699-31222 | besucher@allianz-arena.de | U6 Fröttmaning (from there about a 15-minute walk) | guided tours on various subjects daily except on match and event days | www.allianz-arena.de

Müller'sches Volksbad

A rare sight, the public Müller Baths originally built in the art nouveau style were the most modern baths of their time in Europe ▶ Rosenheimer Str. 1, 81667 Munich | Tel. 01801-796223 | S1-8, tram 17 Isartor | swimming pool daily 7:30am-11pm, great hall Mon only until 5pm | www.swm.de



Müller'sches Volksbad



Allianz Arena

Volkssternwarte *f*amily

Astronomical observatory since 1947. Regular lectures, guided tours for children, and observation evenings ▶ Rosenheimer Str. 145h, 81671 Munich | Tel. 089-406239 | info@sternwarte-muenchen.de | S1-8, tram 25 Rosenheimer Platz, bus 155/55/145 Anzinger Str. | guided evening tours Mon-Fri 9pm | www.sternwarte-muenchen.de

Spurwechsel – Partyrundfahrten mit der Tram

Celebrate a festive event with food and beverages in a moving tram! Ideal for groups of 20 to 150 persons ▶ Spurwechsel – Stadtführungen und Veranstaltungen in München | Tel. 089-6924699 | info@spurwechsel-muenchen.de | www.spurwechsel-muenchen.de

Marionettentheater *f*amily

The puppet theater presents children's stories and fairytales all year round ▶ Blumenstr. 32, 80331 Munich | Tel. 089-265712 | U1-3/6 Sendlinger Tor | ticket reservation daily (except Mon) 10am-1pm | www.muenchner-marionettentheater.de

Die Schauburg (Theater der Jugend) *f*amily

Modern theater plays for children and adolescents ▶ Franz-Joseph-Str. 47, 80801 Munich | Tel. 089-23337155 | theater@schauburg.net | U2 Josephsplatz, U3/6 Giselastrasse | advance ticket sale by phone: Mon-Fri 9:30am-6pm, Sat noon-6pm | www.schauburg.net

Theater für Kinder *f*amily

The children's theater presents stories by Janosch and Astrid Lindgren and well-known fairytales ▶ Dachauerstr. 46, 80335 Munich | Tel. 089-595454 | U1, tram 20/21 Stiglmaierplatz | box office daily 10am-5:30pm | www.muenchner-theater-fuer-kinder.de

Lollihop Kinder-Erlebnis-Welt *f*amily

Bavaria's great indoor children's play park offers numerous opportunities for romping and playing ▶ Colmdorfstr. 3, 81249 Munich-Aubing | Tel. 089-86466080 | S4 Aubing, bus 143 | Mon-Fri 2pm-7:30pm, Sat/Sun/holidays/school holidays 10:30am-7:30pm | www.lollihop.de

Circus Krone family

Every winter the Circus Krone presents three different programs (Dec 25 to end of Mar) ▶ Zirkus-Krone-Str. 1-6, 80335 Munich | Tel. 089-5458000 | S1-8 Hackerbrücke | www.circus-krone.de

Tower Ascents**Frauenkirche (Church of Our Lady) (southern tower) family**

▶ Frauenplatz 1 | S1-8, U3/6 Marienplatz | Mon-Sat 10am-5pm, closed Sun/holidays, elevator ascent Apr-Oct | tower ascent presently not possible due to maintenance work

Rathaus (Town Hall) (85m) family

▶ Marienplatz 8 | S1-8, U3/6 Marienplatz | Nov-Apr: Mon-Fri 10am-5pm, closed Sat/Sun/holidays, May-Oct: Mon-Fri 10am-7pm, Sat/Sun/holidays 10am-7pm | tower ascent

Alter Peter (Saint Peter's Church) family

▶ Rindermarkt | S1-8, U3/6 Marienplatz | summer: Mon-Fri 9am-6.30pm, Sat/Sun/holidays 10am-6.30pm, winter: Mon-Fri 9am-5.30pm, Sat/Sun/holidays 10am-5.30pm | tower ascent

Olympic Tower (290m) family

Birthday children have free admission! ▶ Im Olympiapark | U3 Olympiazentrum, bus 173 Olympiapark-Eisstadion | daily 9am-midnight (last ascent 11:30pm) | tower ascent

Bavaria family

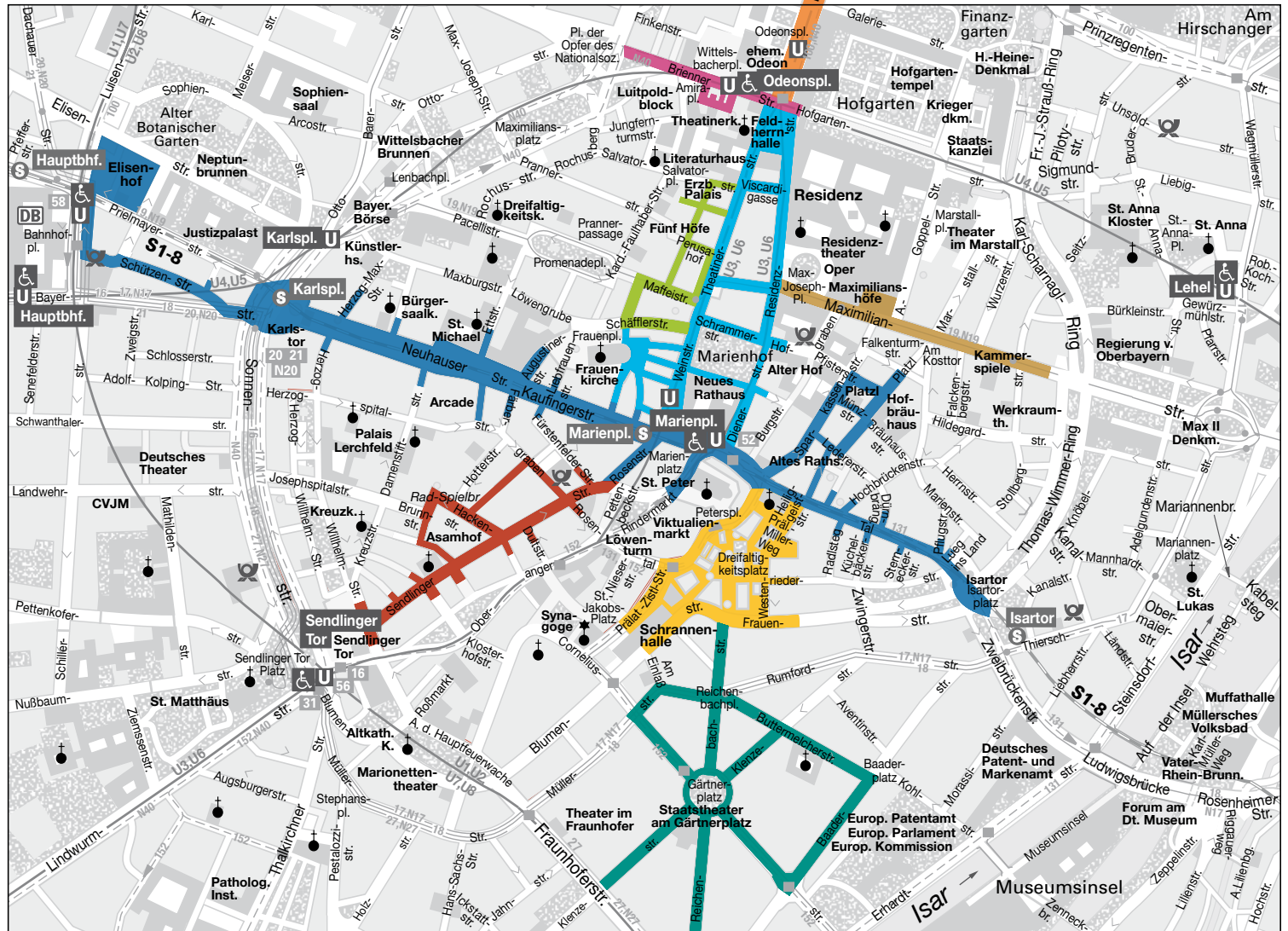
Viewing platform in the head of the Bavaria statue ▶ Theresienhöhe 16 | U4/5 Theresienwiese, bus 131/134 Theresienhöhe | Apr-Oct 15: 9am-6pm, Oct 16-Mar: closed | tower ascent

View of Saint Peter's Church from the Town Hall Tower

**Shopping**

0 100 200 m

↑ Schwabing



City Center
 ▶ Popular shopping mile from Tal via Marienplatz to Hauptbahnhof (Main Train Station)

Theatinerstrasse and Residenzstrasse
 ▶ Area of purveyors to the former royal court and high-class designer labels

Fünf Höfe and Schöfflerblock
 ▶ Unusual items from fashion, literature and interior design

Maximilianstrasse
 ▶ The Mecca of top-of-the-line luxury labels

Gärtnerplatz
 ▶ Hip shopping and creative trendsetters

Brienner Strasse and Luitpoldblock
 ▶ Splendid elegance – class and style

Schwabing and Maxvorstadt
 ▶ Stylish shopping in the artists' quarter

Sendlinger Strasse, Hackenviertel, Hofstatt
 ▶ Charming, urban mix near the Asamkirche church

Viktualienmarkt
 ▶ Land of milk and honey



Driven by the vision that nobody should say they had visited Germany without having seen Munich, King Ludwig I. converted the chaussee which connected his Munich Residence to Nymphenburg Palace into Munich's first boulevard. The name of this boulevard and his first urban project: Brienner Straße. Ludwig's son, Prince Regent Luitpold, honoured the shoemaker, Eduard Meier with the title "Purveyor to the Royal Bavarian Court".

Since then this same purveyor's family has passionately ensured that nobody should say they had visited Munich without having inspected Eduard Meier's window display and premises!

Today the nucleus of Ed/Meier's brand, besides his spectacular handmade footwear, comprises an astonishing collection of loden and tweed suits, velvet blazers and evening jackets and glamorous silk gowns.

Many European and Asian royal families have honoured the supplier by their patronage as far back as 8 generations, as do today's Hollywood stars, rock icons and tycoons from the political and social scene.

Some months ago, a Japanese customer advised us that in the 1920s his great-aunt became acquainted with the excellence of Eduard Meier's European shoes in Munich. He had therefore returned to the Briennerstrasse, as it is now a must for a Japanese collector of European shoes to have at least one pair of Ed/Meiers shoes in his cedar closet.

www.edmeier.de



Like a golden age.
A moment in time.



This is where the world meets to shop.
Open Monday to Saturday until 8 p.m.





Live Music in the Olympic Stadium

Music

Below:
Open Air Classical Music
at Odeonsplatz (l.)
At Ampere, Muffatwerk (r.)





Top: Gasteig (left),
Deutsches Theater (right)



MTV Europe Music
Awards

City Beats

Olympiapark München

Munich has two of Germany's largest venues in the Olympic Stadium and the Olympic Hall ▶ Spiridon-Louis-Ring 21, 80809 Munich | Tel. 089-3067-0 | info@olympiapark | U3 Olympiazentrum, bus 173 Olympiapark-Eisstadion | www.olympiapark.de

Zenith-Gelände: Kulturhalle and Kesselhaus

The classified building, a former factory and railway hall is now a popular location for live concerts, parties, fashion shows and a variety of other events ▶ Lilienthalallee 29 and 37, 80939 Munich | Tel. 089-360351721 | info@zenith-muenchen.de | U6 Freimann | www.zenith-muenchen.de

Atomic Café

The Atomic Café designed in the style of the 1960s ranks among the most popular hip venues in the city. Famous live acts appear with great regularity ▶ Neuturmstr. 5, 80331 Munich | Tel. 089-30777232 | sonic@atomic.de | S1-8, U3/6 Marienplatz, tram 19 Nationaltheater | on weekdays free admission until 11pm (except for concerts) | www.atomic.de

Night Club Bar Bayerischer Hof

Live concerts with the musical repertoire ranging from jazz and blues to R&B, funk and rock are presented in the Night Club Bar and are open to the public! ▶ Promenadeplatz 2-6, 80333 Munich | table reservation: Tel. 089-2120-994 | nightclub@bayerischerhof.de | S1-8, U3/6 Marienplatz, tram 19 Theatinerstrasse | daily 10pm-3am | www.bayerischerhof.de

Deutsches Theater

Germany's largest theater that hosts international top productions reopens in January 2014 ▶ Schwanthalerstr. 13, 80336 Munich | Ticket-Hotline Tel. 089-55234444 | info@deutsches-theater.de | www.deutsches-theater.de

Feierwerk München

The Feierwerk is an accumulation of trendy clubs and event halls presenting a wide range of musical styles ▶ Hansastr. 39-41, 81373 Munich | Tel. 089-72488-0 | kultur@feierwerk.de | S7, U4/5 Heimeranplatz, bus 131/132 Hansapark | www.feierwerk.de

Der Gasteig

Germany's most frequented cultural, educational and conference center presents a wide variety of musical performances ▶ Rosenheimer Str. 5, 81667 Munich | Tel. 089-480980 | kommunikation@gasteig.de | S1-8, tram 15/25 Rosenheimer Platz, tram 18 Am Gasteig, | daily 8am-11pm | www.gasteig.de

Hard Rock Cafe

The Munich "Museum" with a program in rock education! Surrounded by original memorabilia of famous artists young and old enjoy excellent food, live music concerts and international hospitality ▶ Platzl 1, 80331 Munich | Tel. 089-2429490 | munich_salesmgr@hardrock.com | S1-8, U3/6 Marienplatz | Sun-Thu noon-24pm, Fri-Sat noon-2am | www.hardrock.com/munich

Kultfabrik

Approx. 25 clubs and discotheques, a wide variety of concerts of international top stars and an area extending over more than 90,000m². This is the greatest party mile in all of Europe ▶ Grafinger Str. 6, 81671 Munich | Tel. 089-62834440 | info@kultfabrik.de | S1-8, U5, bus 55/100/145/152/155 Ostbahnhof | www.kultfabrik.de

We welcome you! Family Wickenhäuser & Egger



Your family-owned and operated hotel
for your private or business travel

www.cristal-hotel.de



HOTEL DOLOMIT
MÜNCHEN

A reasonably priced hotel
in the heart of Munich

www.hotel-dolomit.de



1912
Restaurant & Bar

Our kitchen team serves a variety of
fresh dishes in an elegant atmosphere

www.1912-restaurant.de

we
Tagungszentrum

Nine modern conference rooms
and event locations

www.we-tagung-muenchen.de



Hotels & Gastronomie

www.we-munich.de



1912-2012
100 Jahre
Familie Wickenhäuser
in München



Lustspielhaus

Optimolwerke

A multi-faceted party and entertainment venue, various interiors and a wide variety of musical styles offer something for every taste
 ▶ Friedenstr. 10, 81671 Munich | Tel. 089-4506920 | S1-8, U5, bus 55/100/145/152/155 Ostbahnhof | www.optimolwerke.de

Jazzbar Vogler

Already for 13 years the Jazzbar Vogler has been catering to jazz fans and lovers of live music with live jazz, soul and music from Latin America ▶ Rumpfstr. 17, 80469 Munich | Tel. 089-294662 | info@jazzbar-vogler.com | S1-8 Isartor, tram 17/18 Reichenbachplatz, bus 131 Isartor | Mon-Sat 7pm-1am, on event nights until 3am, closed Sun | www.jazzbar-vogler.com

Lustspielhaus

The Munich Lustspielhaus located at Occamstrasse in the heart of the Schwabing quarter is one of the greatest cabaret and comedy stages in Germany ▶ Occamstr. 8, 80802 Munich | Tel. 089-344974 | info@lustspielhaus.de | U3/6, bus 53/54/123/140/141 Münchner Freiheit | www.lustspielhaus.de

Muffatwerk/Muffathalle/Muffatcafé/Ampere/Biergarten

A former heating plant with an art nouveau design remains one of Munich's main "energy providers" to this day – at least for hip hop, drum'n'bass and reggae events ▶ Zellstr. 4, 81667 Munich | Tel. 089-45875010 | info@muffatwerk.de | S1-8, tram 15/25 Rosenheimer Platz, tram 18 Deutsches Museum | www.muffatwerk.de

Backstage

For many years the Munich Backstage has provided the city with alternative music events of the heavier type, such as rock/pop, alternative, etc. ▶ Reitknechtstr. 6, 80639 Munich | Tel. 089-1266100 | mail@backstage.eu | S1-8 Hirschgarten, tram 16, 17 Steubenplatz, 18, 19 Lautensackstrasse | the Backstage area is located at Reitknechtstr. 6 (former Wilhelm-Hale Strasse 38) | www.backstage.eu

Jazzclub Unterfahrt

Every evening the internationally renowned Jazzclub Unterfahrt presents a different live concert featuring musicians from local, national and international scenes ▶ Einsteinstr. 42, 81675 Munich | Tel. 089-4482794 | pr@unterfahrt.de | U4/5, tram 15/18/19/25, bus 190/191 Max-Weber Platz | Mon-Sun 7:30pm-1am, beginning of concert: 9pm | www.unterfahrt.de

Schlachthof

The Schlachthof in Munich combines pub and stage in one location. Be it tango evening, political cabaret or concert, this is the right setting for every event ▶ Zenettistr. 9, 80337 Munich | Tel. 089-72625620 | info@im-schlachthof.de | U3/6, bus 132 Poccistrasse, bus 152 Zenettistrasse | Mon-Sat starting at 5pm, Sun at 6pm | www.im-schlachthof.de

Münchner Volkstheater

A refreshingly young theater – be it exotic mixes from the turntable, jazzy numbers or cabaret songs: the Münchner Volkstheater continues to enhance its musical profile ▶ Briener Str. 50, 80333 Munich | Tel. 089-5234655 | theater@muenchner-volkstheater.de | U1, tram 20/21 Stiglmaierplatz | www.muenchner-volkstheater.de

Classical Music

Bayerisches Staatsorchester

The origin of the internationally renowned Bavarian State Orchestra dates back to the 16th century. Since 2008 Nikolaus Bachler has been Managing Director of the Bavarian State Opera; Kent Nagano has been General Music Director since September 2006 ▶ Max-Josephs-Platz 2, 80539 Munich | Tel. 089-218501 | info@staatsoper.de | S1-S8, U3/6 Marienplatz, U3/6 Odeonsplatz, tram 19 Kammerspiele | www.staatsoper.de | www.staatsorchester.de

Symphonieorchester des Bayerischen Rundfunks

The Symphonic Orchestra of the Bavarian Broadcasting Association ranks among the orchestras of high international esteem. Since 2003/2004 Mariss Jansons has been Principal Conductor of the Symphonic Orchestra ▶ Rundfunkplatz 1, 80335 Munich | Tel. 089-5900-3059/2230 | symphonieorchester@brnet.de | S1-S8 Hackerbrücke, tram 16/17 Hopfenstrasse | www.br-klassik.de

Modern 3 star superior hotel conveniently situated

From € 29,50
per person in double room



Conference rooms for up to 100 persons, car park
Complimentary Wireless LAN - connection

Online booking: www.amber-hotels.de · muenchen@econtel-hotels.de
Bodenseestr. 227 · 81243 Munich · phone +49(0)89 87189-0 · fax: extension -400





Conductor Mariss Jansons

Volkstheater



Münchner Rundfunkorchester

The Munich Radio Symphony Orchestra is the second orchestra of the Bavarian Broadcasting Association. Since 2006 it has been under the direction of Ulf Schirmer ▶ Rundfunkplatz 1, 80335 Munich | Tel. 089-5900-2455/3605 | rundfunkorchester@br-online.de | S1-S8 Hackerbrücke, tram 16, 17 Hopfenstrasse | www.br-klassik.de

Münchner Kammerorchester

The repertoire of the Munich Chamber Orchestra ranges from classical to contemporary music. Since 2006 it has been under the direction of Alexander Liebeich ▶ Oskar-von-Müller-Ring 1, 80333 Munich | Tel. 089-46136430 | ticket@m-k-o.eu | U3/6 Odeonsplatz | www.m-k-o.eu

Münchner Philharmoniker

The Munich Philharmonic Orchestra ranks among the top orchestras of the world. With conductors such as Gustav Mahler and Herbert von Karajan they have developed a noteworthy orchestral tradition. Since 2012 Lorin Maazel is Principal Conductor ▶ Kellerstr. 4, 81667 Munich | Tel. 089-480985500 | abo.philharmoniker@muenchen.de | S1-8 Rosenheimer Platz | www.mphil.de

Staatstheater am Gärtnerplatz

The State Theater on Gärtnerplatz was founded in 1864 as action folk theater. Today it covers the entire range of the music theater, including opera, operetta, musical and dance ▶ Gärtnerplatz 3, 80469 Munich | Tel. 089-202411 | info@gaertnerplatztheater.de | S1-8, U3/6 Marienplatz | overall restoration since 2012, performances in alternate sites | www.staatstheater-am-gaertnerplatz.de

Tickets

München Ticket

▶ Advance ticket sale at the Rathaus (Town Hall), Gasteig and Olympic Park
Tel. 0180-54818181 | info@muenchenticket.de | www.muenchenticket.de

Kartenvorverkauf Müller

▶ Advance ticket sale at Marienplatz, lower floor | Advance ticket sale at Stachus, lower floor | Tel. (Marienplatz) 089-292540, Tel. (Stachus) 089-54506060 | www.zkv-muenchen.de

Advance ticket sale at Kaufhof department store

▶ Kaufhof am Stachus, ground floor | (Stachus) Tel. 089-5125336

Ticketbox

▶ Ticketbox Karstadt, Stachus, Schmankerlgasse (delicatessen lane) | ticketbox Pasing, Pasinger Bahnhofplatz 8 | Ticketbox Ludwig Beck department store, Marienplatz 11 | Ticketbox Sendlinger Strasse 8 | Ticketbox Ostbahnhof, Orleansplatz 11 | Tel. 089-557232 | www.ticketbox.de

Imprint

Publisher

City of Munich, Department of Labor and Economic Development, München Tourismus
Herzog-Wilhelm-Str. 15, 80331 München
Tel. +49 89-233-96500, Fax +49 89-233-30233
E-mail: tourismus@muenchen.de
www.munich-tourist.de

Content / Concept / Design

München Tourismus

Translation

Gabriele Graf

Photo Credits

Title: View of the atrium in the Lenbachhaus Gallery Munich with the sculpture "Wirbelwerk", 2012 by Olafur Eliasson, photo: Studio Olafur Eliasson, Courtesy of Städtische Galerie in the Lenbachhaus and Kunstbau Munich © 2012 Olafur Eliasson

Other pictures: München Tourismus

except for: Klinger (p. 2, 3, 4) Kupka (p. 54, S. 63 top), Lutz (14, 52, 53), Parzinger (p. 24), Pinakotheken (p. 22 top, p. 23 top), MVG Museum (p. 31), Bier- und Oktoberfestmuseum (p. 29), Bayerische Schlösserverwaltung (p. 32, 33), Roucka (p. 35 top), BayTM (p. 44, 45), Zugspitzbahn (p. 47), Flughafen München (p. 56 top), Allianz Arena (p. 61, 78/79, 81), Gasteig (p. 72 l. top), Deutsches Theater (p. 72 upper right), MTV Europe (p. 72 bot.), Lustspielhaus (p. 74 top), Volkstheater (p. 76 r.), Bayerischer Rundfunk/Georg Thum (p. 76 upper left)

Advertising

Place your ad in the Munich City Guide!

Contact: christoph.trabert@muenchen.de, robert.leckel@muenchen.de

Print

11/13-40`GB-ED, Ilda-Druck München

Printed on PEFC/FSC certified paper (sustainable forestry)

Status October 2013. Changes and errors excepted. Nominal fee



The State Theater
on Gärtnerplatz



Sport Live



Allianz Arena

In the Olympic Park

Olympiapark München

Munich Olympic Park

365 days a year interesting leisure-time activities in keeping with the latest trends ▶ Spiridon-Louis-Ring 21, 80809 Munich | Tel. 089-3067-0 | info@olympiapark.de | U3 Olympiazentrum, tram 20/21 Olympiapark West, bus 173 Olympiapark-Eisstadion | www.olympiapark.de

Olympic Park at a Glance

▶ For comprehensive information about all events and attractions in the Munich Olympic Park please refer to | www.olympiapark.de

Tickets, Tickets, Tickets

Tickets for all events taking place in the Olympic Park can be purchased from ▶ München Ticket GmbH PO box 20 14 13, 80014 Munich | Tel. 0180-54818181 | www.muenchenticket.de

Olympic Swimming Pool

Including Olympic sauna paradise and wellness area ▶ Tel. 089-3067-2290

Olympic Ice Sport Center

▶ Tel. 089-30672150

SoccArena in the Olympic Park

Indoor soccer on four courts of 30x15m ▶ Tel. 089-3067-2137 | access through the ticket office of the Olympic Ice Sport Center | www.soccarena-olympiapark.de

Olympic Tennis Courts

14 clay courts, floodlights ▶ Tel. 089-3067-2690

Tours of the Olympic Park

Soccer, adventure and roof climbing tours ▶ Tel. 089-3067-2414 | besucherservice@olympiapark.de



81

Munich the Soccer Capital

FC Bayern München Soccer Club

Club Grounds

With training area, office, fan shop, FC Bayern tours ▶ Säbener Strasse 51-57, 81547 Munich | Tel. 089-699310 | U1 Wettersteinplatz, tram 15/25 Kurzstrasse | www.fcbayern.de

Fan Shops

▶ At Allianz Arena, brand world | at the training area, Säbener Str. 51-57 | at the airport, Munich Airport Center | at the Main Train Station, mezzanine level | at the Hofbräuhaus, Orlandostr. 1 | Tel. 01805-365360

Training

▶ Information about current training schedule: Tel. 089-69931111 | www.fcbayern.de

Stadium – Allianz Arena

69,000 seats ▶ Werner-Heisenberg-Allee 25, 80939 Munich | U6 Fröttmaning | www.allianz-arena.de

Tickets

▶ Ticket hotline | Tel. 089-69931333 | tickets@fcb.de

TSV 1860 München Soccer Club

Club Grounds

With training area, office, fan shop, “Löwenstüberl” ▶ Grünwalder Str. 114, 81547 Munich | Tel. 01805-601860 | U1 Mangfallplatz, tram 15/25 Südtiroler Strasse | www.tsv1860.de

Fan Shops

▶ Fan shop Grünwalder Str. 114 | Fan shop Orlandostr. 8 (near Hofbräuhaus)

Training

▶ Information about current training schedule: Tel. 01805-601860

Stadium – Allianz Arena

69,000 seats ▶ U6 Fröttmaning

Tickets

Ticket hotline or directly via the office or at numerous other points of advance ticket sale ▶ Tel. 01805-601860



FC Bayern Erlebniswelt: Germany's biggest club museum

A total of more than five million visitors in 2012 confirms Munich's status as one of Europe's most popular travel and tourist destinations, thanks to its unique architecture, cultural excellence and that special Bavarian flair. Complementing the traditional tourist sights, sport and especially FC Bayern Munich act as a magnet for visitors from all over the world, **because the city offers football of the very highest quality.**

A visit to Munich isn't complete without the perfect combination of the Allianz Arena and the on-site FC Bayern Erlebniswelt, a guaranteed must-see attraction, every day and all year round. Handily located next to the A9 freeway and linked directly to the city centre by the U6 light rail line, the combination of architecture, culture and sport enthral all our visitors.

We offer a range of guided tours of the stadium, and at the heart of the Allianz Arena complex, you can experience what is currently Europe's most successful club in close-up and loving detail. **"It's the most modern and innovative football museum in the world,"** says FC Bayern chairman Karl-Heinz Rummenigge: the FC Bayern Erlebniswelt tells the story of the club in an interactive installation covering more than 3,000 m². The 2013 treble winners invite you to immerse yourself in a fascinating journey through time in Germany's biggest club museum.

The FC Bayern Erlebniswelt enables visitors to quite literally touch and feel the club. In contrast to a traditional football museum, the interactive exhibition on Level 3 of the Allianz Arena features much more than countless fascinating exhibits, including trophies, and boots and shirts worn by Bayern greats past and present. The 113-year history of one of Europe's most famous and successful clubs is retold using an intoxicating blend of facts and infotainment, modern and emotionally moving, but at the same time entirely authentic. Trophies, cups and more than 500 exhibits are displayed using award-winning media technology and interactive elements, drawing in football enthusiasts big and small, lovers of sport, and visitors who are simply inquisitive.

An undoubted highlight in 2013 is the newly-created treble display featuring the original Bundesliga, DFB Cup and Champions League trophies. The info material includes anecdotes from every period in the club's history, provided in exclusive video contributions from true greats including Franz Beckenbauer, Gerd Müller and Lothar Matthäus. The highlights include an authentic recreation of the former boardroom featuring the original furniture and fittings; the Hall of Fame showcasing the club's 16 greatest players to date; and a section devoted to the current team, where Pep Guardiola has already joined the ranks. And for younger fans, we provide a range of interactive stations, consoles and computers to keep them busily amused.

After experiencing the FCB Erlebniswelt, visitors enter the gigantic FC Bayern Megastore, now expanded and modernised, and an even more attractive proposition than ever before. The new Megastore is undoubtedly another highlight of your visit to the Allianz Arena. Official merchandise dedicated to Germany's most successful club fills almost 1,000 m², and is the widest range offered by any Bundesliga club. With more than 500 items for fans, we can fulfil practically every wish.

For information on opening times and admission to the FC Bayern Erlebniswelt, please visit www.fcb-erlebniswelt.de

Sightseeing Tours – All about Soccer

"FC Bayern Soccer Tour"

(in the original team bus, if available)

► SIGHTseeing Gray Line | Schützenstr. 9, 80335 Munich | Tel. 089-54907560 | info@sightseeing-munich.com | www.stadtrundfahrten-muenchen.de

BusTour incl. Allianz Arena

City tour of the historical downtown area to Allianz Arena; 75-minute guided tour of the stadium. No tour on match days;

► Spurwechsel – Stadtführungen in München | Tel. 089-6924699 | info@spurwechselmuenchen.de | www.spurwechsel-muenchen.de

Active Sports in Munich

Swimming (a selection)

► For a complete directory: www.swm.de

Michaelibad

Summer and winter pool with wellness area

► Heinrich-Wieland-Str. 24, 81735 Munich | U5 Neuperlach Süd, Michaelibad

Cosimawellenbad

Munich's only wave pool ► Cosimastr. 5, 81925 Munich | U4 Arbellapark

Dante-Winter-Warmfreibad

Outdoor heated pool, wellness area, open all year round ► Postillonstr. 17, 80637 Munich | tram 21 Westfriedhof, Borstei, U1 Olympia-Einkaufszentrum, Westfriedhof

Müller'sches Volksbad

Art nouveau indoor pool, Roman-Irish steam bath

► Rosenheimer Str. 1, 81667 Munich | S1-8 Rosenheimer Platz

Prinzregentenstadion

Outdoor summer pool, wellness area open all year round

► Prinzregentenstr. 80, 81675 Munich | U4 Arbellapark, Prinzregentenplatz

Maria Einsiedel

Outdoor summer pool with 400m Isar river bath (natural outdoor pool) ► Zentralländstr. 28, 81379 Munich

Südbad

Wellness area open all year round ► Vallestr. 37, 81371 Munich

Fun at the Outdoor Pool



Golf

City Golf Range Freimann

Large indoor and outdoor site. Pay only for the number of balls hit

► Freisinger Landstr. 60, 80939 Munich | Tel. 089-36006410 | info@citygolfcenter.de | daily 8am-8pm | www.citygolfcenter.de

Golfzentrum Munich-Riem

Public 9-hole course. Guest players pay green/range fees

► Graf-Lehndorff-Str. 36, 81929 Munich | Tel. 089-94500800 | info@gciem.de | www.gciem.de

Eberle Golfparks in Munich-Johanniskirchen and Gauting

Public 6-hole course. No club, 1-day ticket, 10-day ticket or annual ticket

► Corneliusstr. 2, 80469 Munich (management) | Tel. 089-2021622 | eberle-golf@web.de | www.eberle-golf.de

Climbing / Bouldern

Boulderwelt

“Climb to your heart’s delight in the largest boulder hall in the world.”

► Friedensstrasse 22a, 81671 Munich | Tel. 089-41859970 | kontakt@boulderwelt.de | Exit Ostbahnhof in the direction of Kultfabrik (Kunstpark Ost) and turn left on Friedensstrasse after approx. 200 m | www.boulderwelt.de

DAV-Kletterzentrum München

Europe’s largest indoor and outdoor climbing center

(with equipment rental) ► Thalkirchener Str. 207, 81371 Munich | Tel. 089-189416311 | service@kbmuenchen.de | U3 Brudermühlstr./Thalkirchen | www.kbmuenchen.de

Heavens Gate

3,000 m² climbing area (with equipment rental)

► Grafinger Str. 6, 81671 Munich | Tel. 089-20003070 | hg@klettermachtspass.de | S 1-8, U5, bus Ostbahnhof | www.klettermachtspass.de

Beach Volleyball, Beach Soccer

Roberto Beach

Indoors and outdoors ► Am Eventpark 20, 85609 Aschheim | Tel. 089-90901860 | willkommen@robertobeach.de | www.robertobeach.de

Beach Arena

Ball upon request ► Föhringer Ring 5, 80805 Munich | Tel. 089-32210100 | info@beacharena.com | U6 Freimann/Studentenstadt | www.beacharena.com

Beach 38°

Indoor and outdoor volleyball, soccer, tennis, badminton, bar and restaurant. Ball rental

► Friedensstr. 22c, 81671 Munich | Tel. 089-63899510 | info@beach38.de | www.beach38.de

Bamboo Beach in the Kultfabrik

► Grafinger Str. 6, 81671 Munich | S 1-8, U5, bus Ostbahnhof | www.kultfabrik.de



Boulderwelt

Water Sports

Canyoning SplaShTour

Organization and implementation of canyoning tours for beginners

► Keferloherstr. 59, 80809 Munich | www.splashtour.de

Ice Skating

Olympia-Eisportzentrum

► Willy-Daume-Platz 1, 80809 Munich | Tel. 089-30672150 | www.olympiapark.de

Eis-/Funsportzentrum Ost

► Staudinger Str. 17, 81735 Munich | U5 Michaelibad, then bus 195 Ostpark Eislaufzentrum | www.sport-muenchen.de

Eis-/Funsportzentrum West

► Agnes-Bernauer-Str. 241, 81241 Munich | tram 19, bus 57 Westbad | www.sport-muenchen.de

Prinzregentenstadion

► Prinzregentenstr. 80, 81675 Munich | U4, bus 54/100 Prinzregentenplatz, tram 18 Friedensengel | Oct-Mar | www.swm.de

Hubertus Fountain and Nymphenburg Canal

Outdoor skating fun

Münchner Eiszauber

Ice skating at Karlsplatz/Stachus (Münchner Zucker'l GmbH)

► S 1-8, U 4/5, tram Karlsplatz | Dec to end of Jan | www.muenchnereiszauber.de

Fitness

Münchner Fitness Parcours

“4Fcircle” (fit, free, fun, function), fitness trail in the Isar floodplains
▶ www.sport-muenchen.de

Inline Skating

Eis-/Funsportzentrum Ost

▶ Equipment rental | Staudinger Str. 17, 81735 Munich | U5 Michaelibad, then bus 195 Ostpark Eislaufzentrum | May-Sept | www.sport-muenchen.de

Eis-/Funsportzentrum West

Equipment rental ▶ Agnes-Bernauer-Str. 241, 81241 Munich | tram 19, bus 57 Westbad | May-Sep | www.sport-muenchen.de

Theresienwiese Southern Part

Meeting place for skateboarders, inline skaters, longboarders, kite skaters. The ramps etc. are removed for major events.

No equipment rental ▶ Theresienwiese | U4/5 Theresienwiese

Münchner Blade Night

▶ Beginning of May to end of Aug, every Mon, start: Theresienhöhe (no equipment rental) | www.muenchner-blade-night.de | detailed information available from the Sportamt München at www.sport-muenchen.de

Cycling

Via Bavarica Tyrolensis

Route through Upper Bavaria and Tyrol, from Munich via Bad Tölz or Lake Tegernsee to Achensee in the Inn valley

▶ www.via-bavarica-tyrolensis.com

Isarradweg

Mostly flat route, beginning at Scharnitz and passing through Mittenwald, past Munich and along the Isar river

▶ www.isarradweg.de

Ammerseeradweg

From Bad Wörishofen via Landsberg am Lech to Eching on Lake Ammersee. The route ends in Munich

M-Wasserweg

82km route from Munich to Gmund offering important information about Munich's drinking water ▶ www.swm.de

Panoramaradweg Isar-Inn

The panorama route offers bicyclists an attractive ride from Munich on the Isar to Wasserburg on the Inn, covering an overall length of 69 km

Bodensee-Königssee-Radweg

418km from Lindau on Lake Bodensee to the Königssee in the Berchtesgaden region ▶ www.bodensee-koenigssee-radweg.com



At the Viktualienmarkt

Mangfallradweg

Mostly flat route along the Mangfall river between Munich and Rosenheim

RadlRing München

170km “bike ring” linking Munich and the surrounding regions. The tour can be divided into 20 separate sections

Radius Radverleih

▶ At the Main Train Station (Hauptbahnhof) opposite track 32 | www.radiusmunich.com

Spurwechsel – Fahrradverleih an der Isar

Bicycle rental and guided bike tours through Munich

▶ Ohlmüllerstr. 5, 81541 Munich | Tel. 089-6924699 | info@spurwechsel-muenchen.de | www.spurwechsel-muenchen.de

DB Rent Call-A-Bike

Approx. 700 bicycles. Registration, rental and return by cell phone or telephone ▶ Tel. 07000-5225522 | info@callabike.de | www.callabike.de

Stadtvogel Fahrradverleih

Bicycle rental at the office at St. Jakobsplatz ▶ Unterer Anger 14, 80331 Munich | Tel. 089-203245360 | info@weisser-stadtvogel.de | www.weisser-stadtvogel.de

Fahrradverleih am Isartor

Bicycle rental ▶ Thomas-Wimmer-Ring 1, 80539 Munich | Tel. 089-24231767 | www.muenchenstadtfuehrungen.de

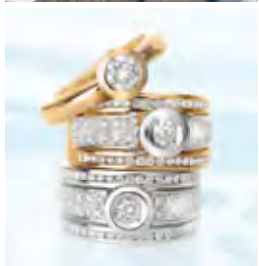
Detailed routes, maps for download, reading tips and useful links for bicyclists are available at: www.muenchen.de/fahrrad

best of galéria

fashion | lifestyle | beauty

**MÜNCHEN
AM MARIENPLATZ**

Welcome to your
GALERIA Kaufhof
München
Am Marienplatz



135604/4

GALERIA Kaufhof GmbH,
Leonhard-Tietz-Str. 1, 50676 Köln

The logo for GALERIA KAUFHOF, featuring a green arch above the word "GALERIA" in green and "KAUFHOF" in yellow below it.

www.galeria.de